



**ENTEK  
CONSULTING GROUP, INC.**

4200 Rocklin Road, Suite 7, Rocklin, CA 95677 Phone (916) 632-6800 Fax (916) 632-6812 www.entekgroup.com

**HAZARDOUS MATERIALS SURVEY  
FINAL REPORT**

**OWNER/CLIENT**

**Stockton Unified School District  
Planning Facilities Division  
1932 North El Pinal Drive  
Stockton, CA 95205-2548**

**CONTACT**

**Mr. Guillermo Fuentes Jr.  
Hazardous Materials Technician**

**SURVEY ADDRESS**

**Stagg High School  
2939 Mission Road  
Stockton, CA 95204**

**BUILDING(S) SURVEYED**

**Gym, Girl's Locker Room, and Boy's Locker Room Buildings  
HVAC Replacement Project**

**PREPARED BY**

**Blake Howes  
CAC #13-5015 & CDPH I/A #3315  
Entek Consulting Group, Inc.  
4200 Rocklin Road, Suite 7  
Rocklin, CA 95677**

**Entek Project #22-6190**

**June 23, 2022**



## TABLE OF CONTENTS

Executive Summary. . . . .	<a href="#">3</a>
Introduction. . . . .	<a href="#">5</a>
Building Descriptions. . . . .	<a href="#">5</a>
Asbestos Inspection and Sample Collection Protocols. . . . .	<a href="#">5</a>
Asbestos Bulk Sample Results. . . . .	<a href="#">6</a>
Asbestos Regulatory Requirements. . . . .	<a href="#">9</a>
Lead Inspection, Sampling, & Results. . . . .	<a href="#">10</a>
Lead Regulatory Compliance. . . . .	<a href="#">11</a>
Fluorescent Light Tubes and Polychlorinated Biphenyls (PCBs).. . . . .	<a href="#">12</a>
Thermostats With Mercury Switches.. . . . .	<a href="#">12</a>
Freon and Fluorocarbons. . . . .	<a href="#">12</a>
Smoke Detectors Which May Contain a Radioactive Element. . . . .	<a href="#">13</a>
Limitations.. . . . .	<a href="#">13</a>

### Appendices

- A. Asbestos Related Documents
- B. Lead Related Documents
- C. Backup Documents

## **Executive Summary**

The United States Environmental Protection Agency, National Emission Standards for Hazardous Air Pollutants (US EPA NESHAP), 40 CFR Part 61 - Nov. 20, 1990, requires an owner or operator of a demolition or renovation project to thoroughly inspect the affected facility or part of the facility where the demolition or renovation operation will occur for the presence of asbestos-containing materials (ACM) prior to the commencement of the project.

This inspection report was requested by Mr. Guillermo Fuentes Jr., Hazardous Materials Technician with the Stockton Unified School District (SUSD).

The purpose of the inspection was to comply with US EPA NESHAP requirements and the San Joaquin Valley Air Pollution Control District (SJVAPCD) which has jurisdiction for this project site to determine if asbestos containing materials are present which may be impacted during upcoming renovation project, which will include replacing the HVAC units of the Gym, Girl's Locker Room, and Boy's Locker Room buildings at Stagg High School, located at 1621 Brookside Road in Stockton, California.

Paint and coatings were also tested for lead content for compliance with Cal/OSHA lead in construction regulations. It is Entek's understanding the school was originally constructed in the 1950's.

The attached drawings show approximate sample locations. Materials are classified in the tables of this report as regulated asbestos containing material (RACM), Category I (CAT-I) or Category II (CAT-II) ACM, or asbestos containing construction material (ACCM), which included collecting multiple samples of some materials.

This is a summary of the report. The report must be read in its entirety, and the reader must review all the detailed information provided in the body of the report prior to making any interpretations, or conclusions pertaining to the information. Any conclusions made by the reader about the information provided in the body of this report which are contradictory or not included in this report are the responsibility of the reader.

### Asbestos

On May 25, 2022 Entek conducted a survey specific to areas designated by the Owner which included all interior and exterior areas of all the Gym Building and interior walls and ceilings and the exterior roof of the Girl's Locker Room and Boy's Locker Room Buildings currently located at Stagg High School.

The results of testing for asbestos during this survey indicate asbestos is present in multiple materials found throughout the buildings mentioned above. During the sampling process of the exterior stucco next to a wall seam, sample number 23E, a sample of the concrete wall panel seam caulking was collected instead of the stucco. That sample will be grouped with the other concrete wall panel seam caulking, sample number 29A.

A quick summary is detailed in the following bullet points, with specifics pertaining to individual materials found in later sections of this report.

## Materials Found or Assumed to Contain Asbestos:

### *Gym Building*

- Hard Pack Pipe Insulation Above HVAC Ducts in Central Air Handling Room
- 6" Outside Diameter Hardpack Pipe Fitting & Elbow Insulation
- Black Coating on Concrete Walls Beneath Plywood Wall Covering
- Black Mastic Pucks Associated with HVAC Fiberglass Insulation Sheets
- Black Fire Stop Caulking
- 8" Outside Diameter Hardpack Pipe Elbow Insulation
- Drywall and Joint Compound

### *Gym Exterior*

- Stucco
- Concrete Wall Panel Seam Caulking
- Window Putty

## Lead

Entek investigated existing paints and applied coatings in an effort to determine if lead was present in these materials. The materials detailed in the following list were all found or assumed to contain more than 5,000 parts per million (ppm) lead and are classified as lead-based paint (LBP). If more than 100 square feet of these materials are impacted by a "trigger task", prior notification to Cal/OSHA will be required.

- White Paint - Interior Ceiling I-Beam, Gym Building
- Yellow Paint - Interior Ceiling I-Beam, Gym Building
- Red Paint - Interior Ceiling I-Beam, Gym Building Air Handling Spaces
- Green Tile Glaze - Interior Ceramic Tile, Wrestling Gym Exterior Restrooms

The paints detailed in the following list were determined to contain lead in amounts less than 5,000 ppm and are classified as lead containing paint (LCP). Any work designated by California Occupational Safety Health Administration (Cal/OSHA) as a "trigger task" which will impact these paints, coatings, or materials must be done by properly trained personnel, in compliance with all lead related Cal/OSHA regulations and requirements.

- Blue/Gray Paint - Interior Ceiling HVAC Ducts, Wrestling Gym
- Blue/Gray Paint - Interior Concrete Walls, Main Gym
- Gray Paint - Interior Plywood Walls, Main Gym
- Beige Paint - Exterior Metal Louvre Vents, Wrestling Gym
- Blue/Gray Paint - Interior Plaster Walls & Ceiling, Girl's & Boy's Locker Rooms

The paints or ceramic tile glazes detailed in the following list were determined not to contain lead above the analysis method detection limit of 100 ppm.

- Beige Paint - Exterior Stucco Walls, Gym, Girl's Locker Room, and Boy's Locker Room buildings
- Dark Gray Paint - Interior Metal Door Frame, Wrestling Gym



## Other Hazardous Materials

Entek did not specifically inspect for mercury containing fluorescent light tubes or light ballast which may contain polychlorinated biphenyls (PCBs), thermostats which may contain mercury switches, equipment or systems which may contain Freon or other fluorocarbons, or smoke detectors which may contain a radioactive element. However, due to the age of the school, information pertaining to these materials is included in this report for your use and reference.

## **Introduction**

This report presents results of an asbestos and lead survey performed by Entek which included select interior and exterior areas of the Gym, Girl's Locker Room, and Boy's Locker Room Buildings for an upcoming HVAC replacement project at Stagg High School, located at 1621 Brookside Road in Stockton, California.

The inspection was conducted by Mr. Blake Howes & Mr. Jose Hernandez on May 25, 2022. Both Mr. Howes & Mr. Hernandez are Cal/OSHA Certified Asbestos Consultants (CAC) and State of California Department of Public Health (CDPH) certified Lead Inspector/Assessors or Sampling Technicians.

This report was prepared for Mr. Guillermo Fuentes Jr., Hazardous Materials Technician with the Stockton Unified School District (SUSD).

## **Building Descriptions**

Interior finish materials found in the Gym, Girl's Locker Room, and Boy's Locker Room Buildings include hardwood flooring, ceramic floor tiles, rubber vinyl base cove, ceramic tile cove base, drywall and joint compound wall/ceiling systems, plaster walls, wood wall panels, and nailed-on acoustic ceiling tiles. Exterior finish materials include stucco finish siding and metal components. Exterior windows are panes set into frames covered with metal window security screens. Roof systems are composition asphaltic rolled roofing, with some silver paint present. Mechanical systems are a mix of roof and interior mounted HVAC units.

The Gym Building has interior air handling spaces above the storage rooms between the three gym areas. Present in these air handling spaces is hard pack pipe insulation that is not accessible above some HVAC systems in the central room area. This pipe insulation is assumed to contain asbestos.

## **Asbestos Inspection and Sample Collection Protocols**

Entek included select interior and exterior areas of the buildings included in this report, but used only limited methods to look within enclosed wall or ceiling cavities during this investigation. Entek did include all suspect materials observed in, on, or associated with the areas included in this report.

Bulk samples were collected of various materials suspected to contain asbestos by utilizing a power drill and coring tube, cutting the materials with a razor knife, or use of other appropriate hand tools.

Surfacing materials were collected in a statistically random manner representative of the associated homogenous area as required in 40 CFR Part 763, Asbestos-Containing Materials in Schools; Final Rule and Notice, published October 30, 1987.

Thermal system insulation (TSI) materials were collected in a randomly distributed manner from each homogenous area that was not assumed to be ACM as required in 40 CFR Part 763, Asbestos-Containing Materials in Schools; Final Rule and Notice, published October 30, 1987.

Miscellaneous materials were collected from each homogenous area in a manner sufficient to determine whether the material is or is not ACM as required in 40 CFR Part 763, Asbestos-Containing Materials in Schools; Final Rule and Notice, published October 30, 1987.

Approximate locations of all samples collected during this inspection are indicated on the "Bulk Asbestos Material Analysis Request Form for Entek", which served as the chain of custody for the samples, and on the building diagrams attached to this report.

### **Asbestos Bulk Sample Results**

There were multiple materials observed which are considered "suspect" under US EPA guidelines. Under current US EPA guidelines for conducting building inspections for ACM, all "suspect" materials must be assumed to contain asbestos until otherwise determined by laboratory testing.

The samples of materials suspected of containing asbestos were submitted to Asbestech, a laboratory located in Rancho Cordova, California. These samples were subsequently analyzed by polarized light microscopy (PLM) with dispersion staining.

The US EPA NESHAP and SJVAPCD uses the terms Regulated Asbestos Containing Material (RACM), Category I, and Category II when identifying materials which contain asbestos in amounts greater than 1%. Cal/OSHA uses the term ACCM which indicates a manufactured construction material contains greater than 0.1% asbestos by weight by the PLM method. This definition can be found in Title 8, 1529.

All samples found to contain <1% asbestos by PLM analysis which are not identified as containing >1% asbestos, classified as RACM, CAT-I, or CAT-II materials in the following results tables were additionally analyzed using the 400 point count (PC) method with analysis by PLM. This additional analysis is required by NESHAP and enforced by SJVAPCD. The PC method analysis results were used only to verify a material did not contain >1% asbestos as a single layer material, or as a composite result which is provided for materials such as sheet rock/drywall and joint compound used for wall/ceiling systems.

A result reported as none detected or "trace" by the PC method only verified the initial PLM result of <1% and shall not be used to determine the identified material does not contain asbestos. Copies of Asbestech's laboratory reports and accreditations are attached in Appendix C. Neither OSHA or Cal/OSHA allow for composite sampling of wall system materials, and neither address the use of the PC method to confirm a material identified as containing <1% asbestos by the PLM method either contains <1% asbestos or is non-

detected for asbestos. As a result, reporting of the asbestos content related to a composited material such as sheet rock/drywall and joint compound does not apply to determining if a material is or is not an ACM by OSHA or an ACCM by Cal/OSHA.

A total of 64 bulk samples were collected of all the materials considered to be "suspect" which were observed during this investigation. Some of those samples contained multiple layers which were individually analyzed to determine their asbestos content. Analysis of all samples collected was by PLM with dispersion staining. Results of the analysis are listed in the following tables:

Suspect Materials Found or Assumed TO Contain Asbestos Gym Building					
Sample ID#'s	Suspect Material	Asbestos Content/Type (%) by PLM/PC	Location	NESHAP/Cal OSHA Classification	Total Estimated Quantity
07A	Mastic Puck Associated with HVAC Fiberglass Insulation Sheets	1-2% CHRYSOTILE	Gym Air Handling Spaces on HVAC Ducts	CAT-II	20 Sq.
08A	Black Firestop Caulking	2-7% CHRYSOTILE	Gym Air Handling Spaces	CAT-II	10 Sq.
10A-B	6" OD Hard Pack Pipe Fitting & Elbow Insulation	2-7% CHRYSOTILE	Gym Building, Wrestling Gym at Ceiling Pipes	RACM	40 Ln.
11A-D	Black Coating on Concrete Wall	1-2% CHRYSOTILE	Gym Building, Beneath Interior Plywood Wall Panels	CAT-II	10,000 Sq.
13A	8" OD Hard Pack Pipe Elbow Insulation	2-7% CHRYSOTILE	Gym Building, Main Gym at Ceiling Pipes & Storage Room	RACM	40 Ln.
15A	6" OD Hard Pack Pipe Elbow Insulation	2-7% CHRYSOTILE	Gym Building, Main Gym at Ceiling Pipes & Storage Room	RACM	40 Ln.
18A-C	Drywall and Joint Compound	<1% CHRYSOTILE	Gym Building, Drywall Walls & Ceilings	ACCM <i>(Confirmed by Point Count)</i>	30,000 Sq.
23A-D, 23F, 23G	Stucco	<1% CHRYSOTILE	Exterior of Gym Building	ACCM <i>(Confirmed by Point Count)</i>	40,000 Sq.
23E, 29A	Concrete Wall Panel Seam Caulking	2-7% CHRYSOTILE	Exterior of Gym Building	CAT-II	400 Sq.
N/A	6" OD Hard Pack Pipe Insulation	ASSUMED TO CONTAIN ASBESTOS	Above HVAC Duct, Gym Air Handling Spaces, Central Room	RACM	60 Ln.

Suspect Materials Found or Assumed TO Contain Asbestos Gym Building					
Sample ID#'s	Suspect Material	Asbestos Content/Type (%) by PLM/PC	Location	NESHAP/Cal OSHA Classification	Total Estimated Quantity
N/A	Window Glazing Putty	ASSUMED TO CONTAIN ASBESTOS	Gym Exterior Windows	CAT-II	20 Sq.

NOTE: Any CAT-I or CAT-II materials identified in the previous tables which will be subjected to mechanical removal, must be considered RACM for the purposes of notification to SJVAPCD and classification of waste. Removal of any CAT-I or CAT-II materials prior to demolition of a building is dependent upon how the materials will be impacted and if the impact will cause the materials to become friable. If any remaining CAT-I or CAT-II materials will become friable they must be removed prior to the initiation of demolition.

NOTE: Cal/OSHA regulates all materials containing greater than 0.1% asbestos. As a result, impact to materials identified as ACCM and ACM must be performed by properly asbestos trained personnel utilizing appropriate personal protection, work practices, as well as, properly constructed and demarcated work areas or containments, in accordance with Cal/OSHA asbestos regulations.

All sample number noted in the tables above start with ECG-22-6190-

All other suspect materials sampled were determined to not contain asbestos. Specifics pertaining to the materials sampled and the sample locations can be referenced in Appendix A.

The tables above provide an estimate of the amount of materials in square feet (Sq.) or linear feet (Ln.). Contractors are responsible for quantifying the exact quantity of materials impacted by the renovation or demolition and shall not rely on the quantities in the above tables.

US EPA AHERA uses three terms when determining the classification of a material for the purpose of sampling. These terms include miscellaneous, surfacing, and thermal system insulation (TSI).

Miscellaneous materials are building materials on structural components, structural members or fixtures, such as floor and ceiling tiles, and does not include surfacing material or TSI.

Surfacing materials are materials that are sprayed-on, troweled-on, or otherwise applied to surfaces, such as acoustical plaster on ceiling and fireproofing materials on structural members, or other materials on surfaces for acoustical, fireproofing, or other purposes.



TSI is material applied to pipes, fittings, boilers, breeching, tanks, ducts, or other structural components to prevent heat loss or gain, water condensation, or for other purposes.

The information provided in the tables of this report are for use by the Owner in determining where asbestos containing materials are located, and whether or not any future work may impact those materials. The information is also provided for use by any contractor who may perform work in areas impacting the materials listed in this report, and for use as appropriate by asbestos abatement contractors to provide costs related to work impacting ACM.

Any building materials which are considered “suspect” for containing asbestos which have not been identified in this report must be assumed to contain asbestos in amounts >1% until properly investigated and/or tested.

Materials commonly excluded from being suspected for containing asbestos include, but are not limited to: unwrapped pink and yellow fiberglass insulating materials or products, foam insulation, bare concrete, wood, metal, plastic, or glass. All other types of building materials or coatings on the materials listed above are commonly listed as “suspect” and must be tested prior to impact by a Contractor. Work impacting these untested or newly discovered materials must cease until an investigation can be completed.

## **Asbestos Regulatory Requirements**

### US EPA

The property included in this survey report is located in San Joaquin County. San Joaquin Valley Air Pollution Control District (SJVAPCD) has been given authority for enforcement of the NESHAP regulations by means of their own rules (Rule 4002).

A demolition is the wrecking, taking out, or burning of any load supporting structural member. A renovation is everything else. *Ten day written notification to the SJVAPCD is required prior to the performance of any demolition project regardless of asbestos being present or not.* This notification would also apply to any renovation project which involves the wrecking, taking out, or burning of any load bearing structural member during a renovation as well.

There is a sufficient amount of ACM present to require a 10 day notification to the SJVAPCD be submitted prior to starting work which will impact materials identified as RACM or CAT-I and CAT-II materials if they are made friable through mechanical means of removal. If more than 160 square feet, 260 linear feet or 35 cubic feet of RACM is planned for removal on the project, formal written notification to SJVAPCD is required.

### Cal/OSHA

Disturbance of any ACM or ACCM could generate airborne asbestos fibers and would be regulated by Cal/OSHA. Cal/OSHA worker health and safety regulations apply during any disturbance of ACM or ACCM by a person while in the employ of another. This is true regardless of friability or quantity disturbed.



Since it has been estimated more than 100 square feet of ACCM or ACM does exist and will be impacted during the upcoming project, a licensed asbestos contractor, certified by the State of California, and registered with Cal/OSHA is required to perform the asbestos related removal work.

For compliance with Title 8, Section 341.9, the asbestos contractor must send written notice at least one day (24 hours) prior to start of any work which will impact any amount of asbestos to the local office for the State of California, Department of Occupational Safety and Health, and perform all work in accordance with Cal/OSHA requirements.

### Lead Inspection, Sampling, & Results

A total of 11 bulk samples of the painted surfaces from various locations throughout the site were collected and submitted to MicroTest Laboratories, Inc. (MicroTest) located in Rancho Cordova, California. The bulk samples were analyzed utilizing the NIOSH 7082 method (including the EPA 7000B and EPA 7420 methods) utilizing flame atomic absorption spectroscopy. MicroTest is accredited by the Environmental Laboratory Accreditation Program (ELAP) to perform the analysis. Results of the analysis are listed in the following tables:

<b>Paints/Coatings/ Materials Determined to be Lead Based Paint (LBP)</b>		
<b>Paint/Coating Color or Material</b>	<b>Lead Content</b>	<b>Component/Location</b>
White Colored Paint	31,998 ppm	Interior I-Beam - Wrestling Gym
Yellow Colored Paint	34,897 ppm	Interior I-Beam - Wrestling Gym
Red Colored Paint	275,691 ppm	Interior I-Beam - Gym Air Handling Spaces
Green Colored Tile Glaze	9,443 ppm	Interior Ceramic Cove Tile - Wrestling Gym Exterior Restroom

LBP - Materials/coatings/paints meeting the definition of lead-based paint as defined by the CDPH and the US EPA, currently defined as containing lead in concentrations equal to or greater than 1.0 mg/cm<sup>2</sup>, 5,000 ppm, or 0.5% by weight.

<b>Paints/Coatings/ Materials Determined to be Lead Containing Paint (LCP)</b>		
<b>Paint/Coating Color or Material</b>	<b>Lead Content</b>	<b>Component/Location</b>
Blue/Gray Colored Paint	385 ppm	Interior Ceiling HVAC Ducts - Wrestling Gym
Blue/Gray Colored Paint	748 ppm	Interior Concrete Walls - Main Gym
Gray Colored Paint	188 ppm	Interior Plywood Walls - Main Gym
Beige Colored Paint	499 ppm	Exterior Metal Louvre Vents - Gym Exterior
Blue/Gray Colored Paint	1312 ppm	Interior Plaster Walls - Girl's Locker Room

LCP - Materials/coatings/paints which contain measurable amounts of lead. The disturbance of these materials/coatings/paints is regulated by Cal/OSHA.

Paints/Coatings/Materials Determined NOT TO Contain Lead	
Paint/Coating Color or Material	Building Component
Beige Colored Paint	Exterior Stucco Walls - Gym Building Exterior Walls
Dark Gray Colored Paint	Interior Metal Door Frame - Wrestling Gym

Paints determined “NOT TO” contain lead for the purposes of this report are those samples which when analyzed did not indicate lead to be present at or above the limit of detection for the analysis method used. This limit of detection was 100 parts per million (ppm). As a result, any paints shown “NOT TO” contain lead will not require any special training or work practices related to lead when impacted.

### Lead Regulatory Compliance

Any upcoming project which may result in the disturbance of lead containing products or surfaces, but is not intended to remediate a lead hazard or specifically designed to remove LBP to reduce or eliminate a known hazard, would be considered “lead related construction work”.

Lead related construction work does not fit the classification of a “lead abatement project” under CDPH Title 17 regulations. “*Abatement*” is defined in Title 17, Division 1, Chapter 8, Article 1 as “any set of measures designed to reduce or eliminate lead hazards or LBP for public and residential buildings, but does not include containment or cleaning.” A *lead hazard* is defined in Title 17, Division 1, Chapter 8, Article 1 as “deteriorated LBP, lead contaminated dust, lead contaminated soil, disturbing LBP or presumed LBP without containment, or any other nuisance which may result in persistent and quantifiable lead exposure.”

*Lead related construction work* means any “construction, alteration, painting, demolition, salvage, renovation, repair, or maintenance of any residential or public building, including preparation and cleanup, that, by using or disturbing lead-containing material or soil, may result in significant exposure of adults or children to lead”. (Title 17, California Code of Regulations, Division 1, Chapter 8, Article 1).

Currently, Cal/OSHA has not established a definition for LBP, nor have they established minimum concentrations where their regulations do not apply. Cal/OSHA regulates all construction activities involving materials containing lead, including LBP. These regulations are found in CCR, Title 8 Section 1532.1 (§1532.1) Lead in Construction.

Since Cal/OSHA has not established a concentration of lead in a product where their regulations do not apply, any disturbance to products containing lead come under the jurisdiction of Cal/OSHA and their regulations. Disturbance of paints/coatings or materials determined to be LBP may trigger a pre-work notification to Cal/OSHA if “trigger tasks” disturb 100 square feet or more of those paints/coatings or materials. Trigger tasks are described in Title 8 CCR 1532.1.

## **Fluorescent Light Tubes and Polychlorinated Biphenyls (PCBs)**

Fluorescent light tubes which contain mercury are considered a universal waste and must be packaged and recycled appropriately if they are removed from a building and not used again. The regulation, called the Universal Waste Rule, are in the California Code of Regulations (CCR), Title 22, Division 4.5, Chapter 23.

Fluorescent light tubes are the bulb or tube portion of an electric lighting device and are commonly referred to as “lamps”. Examples of other common electric lamps considered to be universal wastes include, but are not limited to, high intensity discharge, neon, mercury vapor, high pressure sodium, and metal halide lamps. Any lamp which is not spent and has been designated to be reused is not classified as a waste and does not meet the requirements of a hazardous waste or a universal waste.

Spent lamps typically contain concentrations of mercury exceeding the established Total Threshold Limit Concentration (TTLC) and/or the Soluble Threshold Limit Concentration (STLC) values. Therefore, these lamps must be sent to an authorized recycle facility or to a universal waste consolidator for shipment to an authorized recycling facility.

At a minimum, if removed lamps will not be reused they must be packaged in boxes/packages/containers which are structurally sound, adequate to prevent breakage, and compatible with the content of the lamps. These packages must remain closed and be free of damage which could cause leakage under reasonably foreseeable conditions. Each container must be labeled or marked clearly with one of the following phrases: “Universal Waste Lamp(s),” or “Waste Lamp(s),” or “Used Lamp(s).” Entek recommends shipping any lamp not designated for reuse to a universal waste recycling facility once they have been packaged.

PCB containing light ballasts are to be considered a hazardous waste, and must be properly manifested for transport to a hazardous waste facility. Any contractor who may perform PCB related work (inspection, removal, clean-up) must be trained and qualified to do so. All workers must also follow current OSHA regulations including 29 CFR 1910.120 and 8 CCR 5192, as well as, other applicable federal, state, and local laws, and regulations. While light ballasts marked “No PCB” are not considered a hazardous waste, they are considered a universal waste. As a result, removal, packaging, and disposal/recycling of these types of ballasts must be conducted in accordance with current regulations of Title 22.

## **Thermostats With Mercury Switches**

It is possible existing thermostats may utilize switches containing mercury. The mercury in these switches would be considered a hazardous waste if removed and disposed. Any work requiring removal of thermostats containing mercury switches, must include having the switches inspected for the presence of mercury, and subsequently following all requirements for packaging and disposal of any switch found to contain mercury.

## **Freon and Fluorocarbons**

Freon and other fluorocarbon products associated with HVAC systems, refrigerators, etc. may be present in or on the exterior of the buildings included in this investigation. Prior to demolition of a structure or removal of existing HVAC systems, refrigerators, or any other



type of equipment which typically uses these types of coolant products shall have the coolant materials investigated prior to their demolition and removed from the mechanical systems and recycled in accordance with Cal/EPA requirements.

### **Smoke Detectors Which May Contain a Radioactive Element**

It is possible existing smoke detectors may contain a radioactive element. These types of detectors are easily identified by reviewing the label which is usually found on the back of the detector. Older units may display the international radiation symbol (three bladed propeller) and the radioactive content. Newer units state the radioactive content and their Nuclear Regulatory Agency (NRC) license number.

Any work requiring the removal of smoke detectors with a radioactive element must include contacting the manufacturer of the smoke detector to determine their return policies. The California Department of Toxic Substance Control (DTSC) has stated that it is a condition of the manufacturers NRC license they must accept returned units for disposal.

### **Limitations**

Entek inspected all accessible interior and exterior areas of all Gym Building, and the interior walls and ceilings and exterior roofing of the Girl's Locker Room and Boy's Locker Room Buildings located at the survey site. The information provided in this inspection report may not be used to extend the inspection results to areas not included in this report without additional review and sampling as necessary.

Entek did not performed destructive sampling but used only limited methods to look within enclosed wall or ceiling cavities during this investigation. As a result, it may be possible for materials to be hidden in these areas which are not included in this report. Entek also did not employ any destructive measures on floors of interior spaces or exterior areas covered with asphalt, concrete, or dirt.

If any new materials not listed as having been sampled, or listed as assumed for containing asbestos in this report are discovered, the new material must be assumed to contain asbestos until properly inspected and tested for asbestos content.

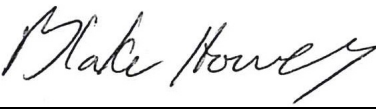
Entek observed damaged pipe insulation above a large HVAC duct inside the air handling spaces inside the Gym Building. This pipe insulation was inaccessible, but visible. Any hard pack pipe insulation found inside the air handling spaces should be assumed to contain asbestos. The exterior windows were also inaccessible, to inspect for window putty, due to being covered with metal security screens. Entek recommends these materials be treated as assumed asbestos containing materials.

Entek's policy is to retain a full copy of these written documents for three (3) years once the file is closed. At the end of the 3 year period the written files will be destroyed without further notice. It is suggested copies of the file(s) are maintained as per the District's policy.

Entek will be providing only this electronic copy of the report and its attachments for your use. However, if you would like a hard copy of this report please do not hesitate to ask. Entek will be happy to mail the report upon receipt of your request.



Thank you for choosing Entek for your environmental needs. Please call me at (916) 632-6800 if you have any questions regarding this report.

Prepared by:   
\_\_\_\_\_  
Blake Howes  
Senior Project Manager  
Cal/OSHA CAC #13-5015  
CDPH I/A Certification #3315

## Appendices

- A. Asbestos Related Documents
- B. Lead Related Documents
- C. Backup Documents

C:\Users\Jose\Entek Consulting Group, Inc\Entekgroup - Documents\Clients\Stockton USD\22-6190 Stagg HS Gym - HVAC Replacement - HazMat\Project Letters & Reports\Haz Mat Insp Rprt Stagg HS 6-22-22 Blake Edits.wpd

## **APPENDIX A**

### **ASBESTOS RELATED DOCUMENTS**

- Bulk Asbestos Analysis Report From Asbestech
- Bulk Asbestos Material Analysis Request Form for Entek
- Asbestos Bulk Sample Location Drawings

ASBESTECH  
 11151 Sun Center Drive, Suite B  
 Rancho Cordova, California 95670  
 Tel.(916) 481-8902 asbestech@sbcglobal.net

**Client:**  
 Entek Consulting Group, Inc.  
 4200 Rocklin Rd., Suite 7  
 Rocklin, CA 95677

**Job:**  
 22-6190 Stockton USD  
 Stagg High School  
 1621 Brookside Rd., Stockton , Ca

**BULK ASBESTOS ANALYSIS REPORT**

LAB JOB # 69522-1  
 Date/Time Collected: 5/25/22  
 Date Received: 5/26/22

NVLAP Lab Code 101442-0  
 CDPH # 1153  
 Date Analyzed: 6/1/22

<i>Sample No.</i>	<i>Color/Description</i>	<i>% Type Asbestos</i>	<i>Other Materials</i>
ECG-22-6190-01A	Black composition rolled asphalt roofing, gym roof	NONE DETECTED	Tar Binder Fibrous Glass
	Gray roofing	NONE DETECTED	Cellulose Pumice
	Silver paint	NONE DETECTED	Opaques
01B	Black composition rolled asphalt roofing, gym roof	NONE DETECTED	Tar Binder Fibrous Glass
	Gray roofing	NONE DETECTED	Cellulose Pumice
	Silver paint	NONE DETECTED	Opaques
01C	Black composition rolled asphalt roofing, gym roof	NONE DETECTED	Tar Binder Fibrous Glass
	Gray roofing	NONE DETECTED	Cellulose Pumice
	Silver paint	NONE DETECTED	Opaques
02A	Silver coating, gym roof at pipes & parapet wall	NONE DETECTED	Tar Binder Fibrous Glass
	Black roofing	NONE DETECTED	Tar Binder Fibrous Glass

THE ANALYSIS USES POLARIZED LIGHT MICROSCOPY AND DISPERSION STAINING FOLLOWING E.P.A. METHOD 600/R-93/116. NON-FRIABLE MATERIALS WERE ANALYZED APPLYING THE SAME METHOD. THE LOWER DETECTION LIMIT IS <1 % WITH THE PROVISIO THAT PLM MAY NOT DETECT FIBERS <0.25 MICRONS IN DIAMETER THAT MAY BE PRESENT IN SAMPLES SUCH AS FLOOR TILES. IN ACCORDANCE WITH TITLE 22, CCR, SECTION 66261.24(a)(2)(A), THE MCL IS 1 %. SAMPLES WERE NOT COLLECTED BY ASBESTECH. THIS REPORT MUST NOT BE REPRODUCED EXCEPT IN FULL WITHOUT THE APPROVAL OF ASBESTECH. THIS REPORT RELATES ONLY TO THE ITEMS TESTED. THIS REPORT MUST NOT BE USED TO CLAIM PRODUCT ENDORSEMENT BY N.V.L.A.P. OR ANY AGENCY OF THE U.S. GOVERNMENT. ASBESTECH ACCEPTS TECHNICAL RESPONSIBILITY FOR THIS REPORT AND DATE OF ISSUE.



ASBESTECH  
 11151 Sun Center Drive, Suite B  
 Rancho Cordova, California 95670  
 Tel.(916) 481-8902 asbestech@sbcglobal.net

**Client:**  
 Entek Consulting Group, Inc.  
 4200 Rocklin Rd., Suite 7  
 Rocklin, CA 95677

**Job:**  
 22-6190 Stockton USD  
 Stagg High School  
 1621 Brookside Rd., Stockton , Ca

**BULK ASBESTOS ANALYSIS REPORT**

LAB JOB # 69522-2  
 Date/Time Collected: 5/25/22  
 Date Received: 5/26/22

NVLAP Lab Code 101442-0  
 CDPH # 1153  
 Date Analyzed: 6/1/22

<i>Sample No.</i>	<i>Color/Description</i>	<i>% Type Asbestos</i>	<i>Other Materials</i>
ECG-22-6190-02B	Silver coating, gym roof at pipes & parapet wall	NONE DETECTED	Tar Binder Fibrous Glass
	Black roofing	NONE DETECTED	Tar Binder Fibrous Glass
02C	Silver coating, gym roof at pipes & parapet wall	NONE DETECTED	Tar Binder Fibrous Glass
	Black roofing	NONE DETECTED	Tar Binder Fibrous Glass
03A	Black roof jack mastic, gym roof ladder hatch curb	NONE DETECTED	Tar Binder Fibrous Glass
	Silver paint	NONE DETECTED	Opagues
04A	Black remnant roofing debris, gym air handling spaces	NONE DETECTED	Granular Mins.
	White roofing	NONE DETECTED	Granular Mins.
	Black tar	NONE DETECTED	Tar Binder
04B	Black remnant roofing debris, gym air handling spaces	NONE DETECTED	Granular Mins.
	White roofing	NONE DETECTED	Granular Mins.
	Black tar	NONE DETECTED	Tar Binder

THE ANALYSIS USES POLARIZED LIGHT MICROSCOPY AND DISPERSION STAINING FOLLOWING E.P.A. METHOD 600/R-93/116. NON-FRIABLE MATERIALS WERE ANALYZED APPLYING THE SAME METHOD. THE LOWER DETECTION LIMIT IS <1 % WITH THE PROVISO THAT PLM MAY NOT DETECT FIBERS <0.25 MICRONS IN DIAMETER THAT MAY BE PRESENT IN SAMPLES SUCH AS FLOOR TILES. IN ACCORDANCE WITH TITLE 22, CCR, SECTION 66261.24(a)(2)(A), THE MCL IS 1 %. SAMPLES WERE NOT COLLECTED BY ASBESTECH. THIS REPORT MUST NOT BE REPRODUCED EXCEPT IN FULL WITHOUT THE APPROVAL OF ASBESTECH. THIS REPORT RELATES ONLY TO THE ITEMS TESTED. THIS REPORT MUST NOT BE USED TO CLAIM PRODUCT ENDORSEMENT BY N.V.L.A.P. OR ANY AGENCY OF THE U.S. GOVERNMENT. ASBESTECH ACCEPTS TECHNICAL RESPONSIBILITY FOR THIS REPORT AND DATE OF ISSUE.

ASBESTECH  
 11151 Sun Center Drive, Suite B  
 Rancho Cordova, California 95670  
 Tel.(916) 481-8902 asbestech@sbcglobal.net

**Client:**  
 Entek Consulting Group, Inc.  
 4200 Rocklin Rd., Suite 7  
 Rocklin, CA 95677

**Job:**  
 22-6190 Stockton USD  
 Stagg High School  
 1621 Brookside Rd., Stockton , Ca

**BULK ASBESTOS ANALYSIS REPORT**

LAB JOB # 69522-3  
 Date/Time Collected: 5/25/22  
 Date Received: 5/26/22

NVLAP Lab Code 101442-0  
 CDPH # 1153  
 Date Analyzed: 6/1/22

<i>Sample No.</i>	<i>Color/Description</i>	<i>% Type Asbestos</i>	<i>Other Materials</i>
ECG-22-6190-04C	Black remnant roofing debris, gym air handling spaces	NONE DETECTED	Granular Mins.
	White roofing	NONE DETECTED	Granular Mins.
	Black tar	NONE DETECTED	Tar Binder
05A	Black HVACV vibration joint dampener, gym air handling spaces	NONE DETECTED	Rubber
	Yellow mastic	NONE DETECTED	Synthetics
06A	Brown HVACV dust insulation tape & paper, gym air handling spaces	NONE DETECTED	Cellulose Synthetics
07A	Black mastic puck associated w/ HVAC fiberglass insulation sheets, gym air handling spaces	1-2 CHRYSOTILE	Opagues Calcite
08A	Black fire stop caulking, gym air handling spaces	2-7 CHRYSOTILE	Synthetics
09A	White 6" OD hardpack pipe insulation , wrestling gym at north ceiling	NONE DETECTED	Pumice
	White wrap	NONE DETECTED	Cellulose

THE ANALYSIS USES POLARIZED LIGHT MICROSCOPY AND DISPERSION STAINING FOLLOWING E.P.A. METHOD 600/R-93/116. NON-FRIABLE MATERIALS WERE ANALYZED APPLYING THE SAME METHOD. THE LOWER DETECTION LIMIT IS <1 % WITH THE PROVISIO THAT PLM MAY NOT DETECT FIBERS <0.25 MICRONS IN DIAMETER THAT MAY BE PRESENT IN SAMPLES SUCH AS FLOOR TILES. IN ACCORDANCE WITH TITLE 22, CCR, SECTION 66261.24(a)(2)(A), THE MCL IS 1%. SAMPLES WERE NOT COLLECTED BY ASBESTECH. THIS REPORT MUST NOT BE REPRODUCED EXCEPT IN FULL WITHOUT THE APPROVAL OF ASBESTECH. THIS REPORT RELATES ONLY TO THE ITEMS TESTED. THIS REPORT MUST NOT BE USED TO CLAIM PRODUCT ENDORSEMENT BY N.V.L.A.P. OR ANY AGENCY OF THE U.S. GOVERNMENT. ASBESTECH ACCEPTS TECHNICAL RESPONSIBILITY FOR THIS REPORT AND DATE OF ISSUE.

ASBESTECH  
 11151 Sun Center Drive, Suite B  
 Rancho Cordova, California 95670  
 Tel.(916) 481-8902 asbestech@sbcglobal.net

**Client:**  
 Entek Consulting Group, Inc.  
 4200 Rocklin Rd., Suite 7  
 Rocklin, CA 95677

**Job:**  
 22-6190 Stockton USD  
 Stagg High School  
 1621 Brookside Rd., Stockton , Ca

**BULK ASBESTOS ANALYSIS REPORT**

LAB JOB # 69522-4  
 Date/Time Collected: 5/25/22  
 Date Received: 5/26/22

NVLAP Lab Code 101442-0  
 CDPH # 1153  
 Date Analyzed: 6/1/22

<i>Sample No.</i>	<i>Color/Description</i>	<i>% Type Asbestos</i>	<i>Other Materials</i>
ECG-22-6190-09B	White 6" OD hardpack pipe insulation , wrestling gym at north ceiling	NONE DETECTED	Pumice
	White wrap	NONE DETECTED	Cellulose
09C	White 6" OD hardpack pipe insulation , wrestling gym at north ceiling	NONE DETECTED	Pumice
	White wrap	NONE DETECTED	Cellulose
10A	White 6" OD hardpack pipe fitting & elbow insulation , wrestling gym at north ceiling	2-7 CHRYSOTILE	Calcite Fibrous Glass
	White wrap	NONE DETECTED	Cellulose
10B	White 6" OD hardpack pipe fitting & elbow insulation , wrestling gym at north ceiling	2-7 CHRYSOTILE	Calcite Fibrous Glass
	White wrap	NONE DETECTED	Cellulose
11A	Black coating on concrete wall, main gym at SE corner behind plywood wall	1-2 CHRYSOTILE	Tar Binder
11B-D	NOT ANALYZED		

THE ANALYSIS USES POLARIZED LIGHT MICROSCOPY AND DISPERSION STAINING FOLLOWING E.P.A. METHOD 600/R-93/116. NON-FRIABLE MATERIALS WERE ANALYZED APPLYING THE SAME METHOD. THE LOWER DETECTION LIMIT IS <1 % WITH THE PROVISO THAT PLM MAY NOT DETECT FIBERS <0.25 MICRONS IN DIAMETER THAT MAY BE PRESENT IN SAMPLES SUCH AS FLOOR TILES. IN ACCORDANCE WITH TITLE 22, CCR, SECTION 66261.24(a)(2)(A), THE MCL IS 1%. SAMPLES WERE NOT COLLECTED BY ASBESTECH. THIS REPORT MUST NOT BE REPRODUCED EXCEPT IN FULL WITHOUT THE APPROVAL OF ASBESTECH. THIS REPORT RELATES ONLY TO THE ITEMS TESTED. THIS REPORT MUST NOT BE USED TO CLAIM PRODUCT ENDORSEMENT BY N.V.L.A.P. OR ANY AGENCY OF THE U.S. GOVERNMENT. ASBESTECH ACCEPTS TECHNICAL RESPONSIBILITY FOR THIS REPORT AND DATE OF ISSUE.

ASBESTECH  
 11151 Sun Center Drive, Suite B  
 Rancho Cordova, California 95670  
 Tel.(916) 481-8902 asbestech@sbcglobal.net

**Client:**  
 Entek Consulting Group, Inc.  
 4200 Rocklin Rd., Suite 7  
 Rocklin, CA 95677

**Job:**  
 22-6190 Stockton USD  
 Stagg High School  
 1621 Brookside Rd., Stockton , Ca

**BULK ASBESTOS ANALYSIS REPORT**

LAB JOB # 69522-5  
 Date/Time Collected: 5/25/22  
 Date Received: 5/26/22

NVLAP Lab Code 101442-0  
 CDPH # 1153  
 Date Analyzed: 6/1/22

<u>Sample No.</u>	<u>Color/Description</u>	<u>% Type Asbestos</u>	<u>Other Materials</u>
ECG-22-6190-12A	White 8" OD hardpack pipe insulation , main gym at NE storage room	NONE DETECTED	Pumice
	White wrap	NONE DETECTED	Cellulose
12B	White 8" OD hardpack pipe insulation , main gym at NE storage room	NONE DETECTED	Pumice
	White wrap	NONE DETECTED	Cellulose
12C	White 8" OD hardpack pipe insulation , main gym at NE storage room	NONE DETECTED	Pumice
	White wrap	NONE DETECTED	Cellulose
13A	White 8" OD hardpack pipe elbow insulation , main gym at NE storage room	NONE DETECTED	Pumice
	White insulation	2-7 CHRYSOTILE	Calcite Fibrous Glass
14A	White 6" OD hardpack pipe insulation , main gym at NE storage room	NONE DETECTED	Pumice
14B	White 6" OD hardpack pipe insulation , main gym at NE storage room	NONE DETECTED	Pumice
14C	White 6" OD hardpack pipe insulation , main gym at NE storage room	NONE DETECTED	Pumice

THE ANALYSIS USES POLARIZED LIGHT MICROSCOPY AND DISPERSION STAINING FOLLOWING E.P.A. METHOD 600/R-93/116. NON-FRIABLE MATERIALS WERE ANALYZED APPLYING THE SAME METHOD. THE LOWER DETECTION LIMIT IS <1 % WITH THE PROVISO THAT PLM MAY NOT DETECT FIBERS <0.25 MICRONS IN DIAMETER THAT MAY BE PRESENT IN SAMPLES SUCH AS FLOOR TILES. IN ACCORDANCE WITH TITLE 22, CCR, SECTION 66261.24(a)(2)(A), THE MCL IS 1%. SAMPLES WERE NOT COLLECTED BY ASBESTECH. THIS REPORT MUST NOT BE REPRODUCED EXCEPT IN FULL WITHOUT THE APPROVAL OF ASBESTECH. THIS REPORT RELATES ONLY TO THE ITEMS TESTED. THIS REPORT MUST NOT BE USED TO CLAIM PRODUCT ENDORSEMENT BY N.V.L.A.P. OR ANY AGENCY OF THE U.S. GOVERNMENT. ASBESTECH ACCEPTS TECHNICAL RESPONSIBILITY FOR THIS REPORT AND DATE OF ISSUE.

ASBESTECH  
 11151 Sun Center Drive, Suite B  
 Rancho Cordova, California 95670  
 Tel.(916) 481-8902 asbestech@sbcglobal.net

**Client:**  
 Entek Consulting Group, Inc.  
 4200 Rocklin Rd., Suite 7  
 Rocklin, CA 95677

**Job:**  
 22-6190 Stockton USD  
 Stagg High School  
 1621 Brookside Rd., Stockton , Ca

**BULK ASBESTOS ANALYSIS REPORT**

LAB JOB # 69522-6  
 Date/Time Collected: 5/25/22  
 Date Received: 5/26/22

NVLAP Lab Code 101442-0  
 CDPH # 1153  
 Date Analyzed: 6/1/22

<i>Sample No.</i>	<i>Color/Description</i>	<i>% Type Asbestos</i>	<i>Other Materials</i>
ECG-22-6190-15A	White 6" OD hardpack pipe elbow insulation , main gym at NE storage room	2-7 CHRYSOTILE	Gypsum Fibrous Glass
	Tan paint	NONE DETECTED	Opagues
16A	Gray water tank insulation wrap, gym boiler room at large tank	NONE DETECTED	Calcite Fibrous Glass
	White wrap	NONE DETECTED	Cellulose Opagues
16B	Gray water tank insulation wrap, gym boiler room at large tank	NONE DETECTED	Calcite Fibrous Glass
16C	Gray water tank insulation wrap, gym boiler room at large tank	NONE DETECTED	Calcite Fibrous Glass
17A	Black "L" shaped base cove, wrestling gym	NONE DETECTED	Vinyl
	Yellow adhesive	NONE DETECTED	Synthetics
17B	Black "L" shaped base cove, main gym	NONE DETECTED	Vinyl
	Yellow adhesive	NONE DETECTED	Synthetics

THE ANALYSIS USES POLARIZED LIGHT MICROSCOPY AND DISPERSION STAINING FOLLOWING E.P.A. METHOD 600/R-93/116. NON-FRIABLE MATERIALS WERE ANALYZED APPLYING THE SAME METHOD. THE LOWER DETECTION LIMIT IS <1 % WITH THE PROVISO THAT PLM MAY NOT DETECT FIBERS <0.25 MICRONS IN DIAMETER THAT MAY BE PRESENT IN SAMPLES SUCH AS FLOOR TILES. IN ACCORDANCE WITH TITLE 22, CCR, SECTION 66261.24(a)(2)(A), THE MCL IS 1%. SAMPLES WERE NOT COLLECTED BY ASBESTECH. THIS REPORT MUST NOT BE REPRODUCED EXCEPT IN FULL WITHOUT THE APPROVAL OF ASBESTECH. THIS REPORT RELATES ONLY TO THE ITEMS TESTED. THIS REPORT MUST NOT BE USED TO CLAIM PRODUCT ENDORSEMENT BY N.V.L.A.P. OR ANY AGENCY OF THE U.S. GOVERNMENT. ASBESTECH ACCEPTS TECHNICAL RESPONSIBILITY FOR THIS REPORT AND DATE OF ISSUE.

ASBESTECH  
 11151 Sun Center Drive, Suite B  
 Rancho Cordova, California 95670  
 Tel.(916) 481-8902 asbestech@sbcglobal.net

**Client:**  
 Entek Consulting Group, Inc.  
 4200 Rocklin Rd., Suite 7  
 Rocklin, CA 95677

**Job:**  
 22-6190 Stockton USD  
 Stagg High School  
 1621 Brookside Rd., Stockton , Ca

**BULK ASBESTOS ANALYSIS REPORT**

LAB JOB # 69522-7  
 Date/Time Collected: 5/25/22  
 Date Received: 5/26/22

NVLAP Lab Code 101442-0  
 CDPH # 1153  
 Date Analyzed: 6/1/22

<i>Sample No.</i>	<i>Color/Description</i>	<i>% Type Asbestos</i>	<i>Other Materials</i>
ECG-22-6190-18A	White drywall , gym air handling spaces	NONE DETECTED	Gypsum Fibrous Glass
	White joint compound	<1 CHRYSOTILE	Calcite
	Composite	<1 CHRYSOTILE	Gypsum Fibrous Glass Calcite
18B	White drywall , main gym NW foyer	NONE DETECTED	Gypsum Fibrous Glass
	White joint compound 1	<1 CHRYSOTILE	Calcite
	White joint compound 2	<1 CHRYSOTILE	Calcite
	Composite	<1 CHRYSOTILE	Gypsum Fibrous Glass Calcite
18C	White joint compound 1 , gym boiler room ceiling	<1 CHRYSOTILE	Calcite
	White joint compound 2	<1 CHRYSOTILE	Calcite
19A	Green 1” ceramic floor tile, wrestling gym exterior staff restroom	NONE DETECTED	Granular Mins.
	Gray grout	NONE DETECTED	Granular Mins.

THE ANALYSIS USES POLARIZED LIGHT MICROSCOPY AND DISPERSION STAINING FOLLOWING E.P.A. METHOD 600/R-93/116. NON-FRIABLE MATERIALS WERE ANALYZED APPLYING THE SAME METHOD. THE LOWER DETECTION LIMIT IS <1 % WITH THE PROVISO THAT PLM MAY NOT DETECT FIBERS <0.25 MICRONS IN DIAMETER THAT MAY BE PRESENT IN SAMPLES SUCH AS FLOOR TILES. IN ACCORDANCE WITH TITLE 22, CCR, SECTION 66261.24(a)(2)(A), THE MCL IS 1%. SAMPLES WERE NOT COLLECTED BY ASBESTECH. THIS REPORT MUST NOT BE REPRODUCED EXCEPT IN FULL WITHOUT THE APPROVAL OF ASBESTECH. THIS REPORT RELATES ONLY TO THE ITEMS TESTED. THIS REPORT MUST NOT BE USED TO CLAIM PRODUCT ENDORSEMENT BY N.V.L.A.P. OR ANY AGENCY OF THE U.S. GOVERNMENT. ASBESTECH ACCEPTS TECHNICAL RESPONSIBILITY FOR THIS REPORT AND DATE OF ISSUE.

ASBESTECH  
 11151 Sun Center Drive, Suite B  
 Rancho Cordova, California 95670  
 Tel.(916) 481-8902 asbestech@sbcglobal.net

**Client:**  
 Entek Consulting Group, Inc.  
 4200 Rocklin Rd., Suite 7  
 Rocklin, CA 95677

**Job:**  
 22-6190 Stockton USD  
 Stagg High School  
 1621 Brookside Rd., Stockton , Ca

**BULK ASBESTOS ANALYSIS REPORT**

LAB JOB # 69522-8  
 Date/Time Collected: 5/25/22  
 Date Received: 5/26/22

NVLAP Lab Code 101442-0  
 CDPH # 1153  
 Date Analyzed: 6/1/22

<i>Sample No.</i>	<i>Color/Description</i>	<i>% Type Asbestos</i>	<i>Other Materials</i>
ECG-22-6190-20A	Green 6" ceramic cove tile, wrestling gym exterior staff restroom	NONE DETECTED	Granular Mins.
	Gray grout	NONE DETECTED	Granular Mins.
21A	Brown/white 18" acoustic ceiling tile (nailed on), wrestling gym	NONE DETECTED	Cellulose
21B	Brown/white 18" acoustic ceiling tile (nailed on), auxiliary gym	NONE DETECTED	Cellulose
21C	Brown/white 18" acoustic ceiling tile (nailed on), main gym	NONE DETECTED	Cellulose
22A	Gray concrete wall, wrestling gym	NONE DETECTED	Granular Mins.
	Green paint	NONE DETECTED	Opagues
22B	Gray concrete wall, main gym	NONE DETECTED	Granular Mins.
22C	Gray concrete wall, auxiliary gym	NONE DETECTED	Granular Mins.
23A	Tan stucco, gym bldg. exterior	<1 CHRYSOTILE	Granular Mins.
	Black stucco	<1 CHRYSOTILE	Granular Mins. Opagues

THE ANALYSIS USES POLARIZED LIGHT MICROSCOPY AND DISPERSION STAINING FOLLOWING E.P.A. METHOD 600/R-93/116. NON-FRIABLE MATERIALS WERE ANALYZED APPLYING THE SAME METHOD. THE LOWER DETECTION LIMIT IS <1 % WITH THE PROVISO THAT PLM MAY NOT DETECT FIBERS <0.25 MICRONS IN DIAMETER THAT MAY BE PRESENT IN SAMPLES SUCH AS FLOOR TILES. IN ACCORDANCE WITH TITLE 22, CCR, SECTION 66261.24(a)(2)(A), THE MCL IS 1 %. SAMPLES WERE NOT COLLECTED BY ASBESTECH. THIS REPORT MUST NOT BE REPRODUCED EXCEPT IN FULL WITHOUT THE APPROVAL OF ASBESTECH. THIS REPORT RELATES ONLY TO THE ITEMS TESTED. THIS REPORT MUST NOT BE USED TO CLAIM PRODUCT ENDORSEMENT BY N.V.L.A.P. OR ANY AGENCY OF THE U.S. GOVERNMENT. ASBESTECH ACCEPTS TECHNICAL RESPONSIBILITY FOR THIS REPORT AND DATE OF ISSUE.



ASBESTECH  
 11151 Sun Center Drive, Suite B  
 Rancho Cordova, California 95670  
 Tel.(916) 481-8902 asbestech@sbcglobal.net

**Client:**  
 Entek Consulting Group, Inc.  
 4200 Rocklin Rd., Suite 7  
 Rocklin, CA 95677

**Job:**  
 22-6190 Stockton USD  
 Stagg High School  
 1621 Brookside Rd., Stockton , Ca

**BULK ASBESTOS ANALYSIS REPORT**

LAB JOB # 69522-9  
 Date/Time Collected: 5/25/22  
 Date Received: 5/26/22

NVLAP Lab Code 101442-0  
 CDPH # 1153  
 Date Analyzed: 6/1/22

<i>Sample No.</i>	<i>Color/Description</i>	<i>% Type Asbestos</i>	<i>Other Materials</i>
ECG-22-6190-23B	Tan stucco, gym bldg. exterior	<1 CHRYSOTILE	Granular Mins.
	Black stucco	<1 CHRYSOTILE	Granular Mins. Opagues
23C	Tan stucco, gym bldg. exterior	<1 CHRYSOTILE	Granular Mins.
23D	Tan stucco, gym bldg. exterior	<1 CHRYSOTILE	Granular Mins.
	Silver stucco	<1 CHRYSOTILE	Granular Mins.
23E	Silver/black stucco, gym bldg. exterior	2-7 CHRYSOTILE	Tar Binder Opagues
<div style="border: 1px solid red; padding: 2px; display: inline-block;"> <b>Sample 23E is assumed to be stucco wall panel caulking</b> </div>			
23F	Tan stucco, gym bldg. exterior	<1 CHRYSOTILE	Granular Mins.
23G	Tan stucco, gym bldg. exterior	<1 CHRYSOTILE	Granular Mins.
24A	White plaster, girl's locker room bldg.	NONE DETECTED	Granular Mins.
24B	White plaster, girl's locker room bldg.	NONE DETECTED	Granular Mins.
24C	White plaster, girl's locker room bldg.	NONE DETECTED	Granular Mins.

THE ANALYSIS USES POLARIZED LIGHT MICROSCOPY AND DISPERSION STAINING FOLLOWING E.P.A. METHOD 600/R-93/116. NON-FRIABLE MATERIALS WERE ANALYZED APPLYING THE SAME METHOD. THE LOWER DETECTION LIMIT IS <1 % WITH THE PROVISIO THAT PLM MAY NOT DETECT FIBERS <0.25 MICRONS IN DIAMETER THAT MAY BE PRESENT IN SAMPLES SUCH AS FLOOR TILES. IN ACCORDANCE WITH TITLE 22, CCR, SECTION 66261.24(a)(2)(A), THE MCL IS 1%. SAMPLES WERE NOT COLLECTED BY ASBESTECH. THIS REPORT MUST NOT BE REPRODUCED EXCEPT IN FULL WITHOUT THE APPROVAL OF ASBESTECH. THIS REPORT RELATES ONLY TO THE ITEMS TESTED. THIS REPORT MUST NOT BE USED TO CLAIM PRODUCT ENDORSEMENT BY N.V.L.A.P. OR ANY AGENCY OF THE U.S. GOVERNMENT. ASBESTECH ACCEPTS TECHNICAL RESPONSIBILITY FOR THIS REPORT AND DATE OF ISSUE.



ASBESTECH  
 11151 Sun Center Drive, Suite B  
 Rancho Cordova, California 95670  
 Tel.(916) 481-8902 asbestech@sbcglobal.net

**Client:**  
 Entek Consulting Group, Inc.  
 4200 Rocklin Rd., Suite 7  
 Rocklin, CA 95677

**Job:**  
 22-6190 Stockton USD  
 Stagg High School  
 1621 Brookside Rd., Stockton , Ca

**BULK ASBESTOS ANALYSIS REPORT**

LAB JOB # 69522-10  
 Date/Time Collected: 5/25/22  
 Date Received: 5/26/22

NVLAP Lab Code 101442-0  
 CDPH # 1153  
 Date Analyzed: 6/1/22

<i>Sample No.</i>	<i>Color/Description</i>	<i>% Type Asbestos</i>	<i>Other Materials</i>
ECG-22-6190-25A	Black composition rolled asphalt roofing, girl's locker room bldg.	NONE DETECTED	Tar Binder Fibrous Glass
	Gray roofing	NONE DETECTED	Cellulose Pumice
	Silver paint	NONE DETECTED	Opagues
26A	White plaster, boy's locker room bldg.	NONE DETECTED	Granular Mins.
26B	White plaster, boy's locker room bldg.	NONE DETECTED	Granular Mins.
26C	White plaster, boy's locker room bldg.	NONE DETECTED	Granular Mins.
27A	Black composition rolled asphalt roofing, boy's locker room bldg.	NONE DETECTED	Tar Binder Fibrous Glass
	Gray roofing	NONE DETECTED	Cellulose Pumice
	Silver paint	NONE DETECTED	Opagues
28A	Gray HVAC duct seam tape, boy's locker room bldg. roof	NONE DETECTED	Calcite
	White tape	NONE DETECTED	Opagues Calcite

THE ANALYSIS USES POLARIZED LIGHT MICROSCOPY AND DISPERSION STAINING FOLLOWING E.P.A. METHOD 600/R-93/116. NON-FRIABLE MATERIALS WERE ANALYZED APPLYING THE SAME METHOD. THE LOWER DETECTION LIMIT IS <1 % WITH THE PROVISIO THAT PLM MAY NOT DETECT FIBERS <0.25 MICRONS IN DIAMETER THAT MAY BE PRESENT IN SAMPLES SUCH AS FLOOR TILES. IN ACCORDANCE WITH TITLE 22, CCR, SECTION 66261.24(a)(2)(A), THE MCL IS 1 %. SAMPLES WERE NOT COLLECTED BY ASBESTECH. THIS REPORT MUST NOT BE REPRODUCED EXCEPT IN FULL WITHOUT THE APPROVAL OF ASBESTECH. THIS REPORT RELATES ONLY TO THE ITEMS TESTED. THIS REPORT MUST NOT BE USED TO CLAIM PRODUCT ENDORSEMENT BY N.V.L.A.P. OR ANY AGENCY OF THE U.S. GOVERNMENT. ASBESTECH ACCEPTS TECHNICAL RESPONSIBILITY FOR THIS REPORT AND DATE OF ISSUE.

ASBESTECH  
11151 Sun Center Drive, Suite B  
Rancho Cordova, California 95670  
Tel.(916) 481-8902 asbestech@sbcglobal.net

**Client:**  
Entek Consulting Group, Inc.  
4200 Rocklin Rd., Suite 7  
Rocklin, CA 95677

**Job:**  
22-6190 Stockton USD  
Stagg High School  
1621 Brookside Rd., Stockton , Ca

### **BULK ASBESTOS ANALYSIS REPORT**

LAB JOB # 69522-11  
Date/Time Collected: 5/25/22  
Date Received: 5/26/22

NVLAP Lab Code 101442-0  
CDPH # 1153  
Date Analyzed: 6/1/22

<i>Sample No.</i>	<i>Color/Description</i>	<i>% Type Asbestos</i>	<i>Other Materials</i>
ECG-22-6190-29A	Silver concrete wall panel seam caulking, gym bldg. exterior	2-7 CHRYSOTILE	Tar Binder Opagues

THE ANALYSIS USES POLARIZED LIGHT MICROSCOPY AND DISPERSION STAINING FOLLOWING E.P.A. METHOD 600/R-93/116. NON-FRIABLE MATERIALS WERE ANALYZED APPLYING THE SAME METHOD. THE LOWER DETECTION LIMIT IS <1 % WITH THE PROVISIO THAT PLM MAY NOT DETECT FIBERS <0.25 MICRONS IN DIAMETER THAT MAY BE PRESENT IN SAMPLES SUCH AS FLOOR TILES. IN ACCORDANCE WITH TITLE 22, CCR, SECTION 66261.24(a)(2)(A), THE MCL IS 1%. SAMPLES WERE NOT COLLECTED BY ASBESTECH. THIS REPORT MUST NOT BE REPRODUCED EXCEPT IN FULL WITHOUT THE APPROVAL OF ASBESTECH. THIS REPORT RELATES ONLY TO THE ITEMS TESTED. THIS REPORT MUST NOT BE USED TO CLAIM PRODUCT ENDORSEMENT BY N.V.L.A.P. OR ANY AGENCY OF THE U.S. GOVERNMENT. ASBESTECH ACCEPTS TECHNICAL RESPONSIBILITY FOR THIS REPORT AND DATE OF ISSUE.

ASBESTECH  
11151 Sun Center Drive, Suite B  
Rancho Cordova, California 95670  
Tel.(916) 481-8902 asbestech@sbcglobal.net

**Client:**  
Entek Consulting Group, Inc.  
4200 Rocklin Rd., Suite 7  
Rocklin, CA 95677

**Job:**  
22-6190 Stockton USD  
Stagg High School  
1621 Brookside Rd., Stockton , Ca

### **BULK ASBESTOS ANALYSIS REPORT**

LAB JOB # 69534-1  
Date/Time Collected: 5/25/22  
Date Received: 5/26/22

NVLAP Lab Code 101442-0  
CDPH # 1153  
Date Analyzed: 6/6/22

<i>Sample No.</i>	<i>Color/Description</i>	<i>% Type Asbestos</i>	<i>Other Materials</i>
ECG-22-6190-18A	White drywall/ joint compound composite, gym air handling spaces	TRACE CHRYSOTILE	Gypsum Fibrous Glass Calcite
18B	White drywall/joint compound composite , main gym NW foyer	TRACE CHRYSOTILE	Gypsum Fibrous Glass Calcite
18C	White joint compound 1 & 2 , gym boiler room ceiling	<1 CHRYSOTILE	Calcite
23A	Tan stucco, gym bldg. exterior	TRACE CHRYSOTILE	Granular Mins.
23B	Tan stucco, gym bldg. exterior	TRACE CHRYSOTILE	Granular Mins.
23C	Tan stucco, gym bldg. exterior	TRACE CHRYSOTILE	Granular Mins.
23D	Tan stucco, gym bldg. exterior	TRACE CHRYSOTILE	Granular Mins.

NOTE: These samples were analyzed by quantitative Point Counting using a Chalkley Point Array over 400 non-empty points.

THE ANALYSIS USES POLARIZED LIGHT MICROSCOPY AND DISPERSION STAINING FOLLOWING E.P.A. METHOD 600/R-93/116. NON-FRIABLE MATERIALS WERE ANALYZED APPLYING THE SAME METHOD. THE LOWER DETECTION LIMIT IS <1 % WITH THE PROVISO THAT PLM MAY NOT DETECT FIBERS <0.25 MICRONS IN DIAMETER THAT MAY BE PRESENT IN SAMPLES SUCH AS FLOOR TILES. IN ACCORDANCE WITH TITLE 22, CCR, SECTION 66261.24(a)(2)(A), THE MCL IS 1%. SAMPLES WERE NOT COLLECTED BY ASBESTECH. THIS REPORT MUST NOT BE REPRODUCED EXCEPT IN FULL WITHOUT THE APPROVAL OF ASBESTECH. THIS REPORT RELATES ONLY TO THE ITEMS TESTED. THIS REPORT MUST NOT BE USED TO CLAIM PRODUCT ENDORSEMENT BY N.V.L.A.P. OR ANY AGENCY OF THE U.S. GOVERNMENT. ASBESTECH ACCEPTS TECHNICAL RESPONSIBILITY FOR THIS REPORT AND DATE OF ISSUE.

ASBESTECH  
11151 Sun Center Drive, Suite B  
Rancho Cordova, California 95670  
Tel.(916) 481-8902 asbestech@sbcglobal.net

**Client:**  
Entek Consulting Group, Inc.  
4200 Rocklin Rd., Suite 7  
Rocklin, CA 95677

**Job:**  
22-6190 Stockton USD  
Stagg High School  
1621 Brookside Rd., Stockton , Ca

### **BULK ASBESTOS ANALYSIS REPORT**

LAB JOB # 69534-2  
Date/Time Collected: 5/25/22  
Date Received: 5/26/22

NVLAP Lab Code 101442-0  
CDPH # 1153  
Date Analyzed: 6/6/22

<i>Sample No.</i>	<i>Color/Description</i>	<i>% Type Asbestos</i>	<i>Other Materials</i>
ECG-22-6190-23F	Tan stucco, gym bldg. exterior	TRACE CHRYSOTILE	Granular Mins.
23G	Tan stucco, gym bldg. exterior	<1 CHRYSOTILE	Granular Mins.

NOTE: These samples were analyzed by quantitative Point Counting using a Chalkley Point Array over 400 non-empty points.

THE ANALYSIS USES POLARIZED LIGHT MICROSCOPY AND DISPERSION STAINING FOLLOWING E.P.A. METHOD 600/R-93/116. NON-FRIABLE MATERIALS WERE ANALYZED APPLYING THE SAME METHOD. THE LOWER DETECTION LIMIT IS <1 % WITH THE PROVISIO THAT PLM MAY NOT DETECT FIBERS <0.25 MICRONS IN DIAMETER THAT MAY BE PRESENT IN SAMPLES SUCH AS FLOOR TILES. IN ACCORDANCE WITH TITLE 22, CCR, SECTION 66261.24(a)(2)(A), THE MCL IS 1%. SAMPLES WERE NOT COLLECTED BY ASBESTECH. THIS REPORT MUST NOT BE REPRODUCED EXCEPT IN FULL WITHOUT THE APPROVAL OF ASBESTECH. THIS REPORT RELATES ONLY TO THE ITEMS TESTED. THIS REPORT MUST NOT BE USED TO CLAIM PRODUCT ENDORSEMENT BY N.V.L.A.P. OR ANY AGENCY OF THE U.S. GOVERNMENT. ASBESTECH ACCEPTS TECHNICAL RESPONSIBILITY FOR THIS REPORT AND DATE OF ISSUE.



69522

# BULK ASBESTOS MATERIAL *Analysis Request*

## ENTEK CONSULTING GROUP, INC.

4200 ROCKLIN ROAD, SUITE 7  
ROCKLIN, CA 95677  
(916) 632-6800 PHONE  
(916) 632-6812 FAX  
[mainoffice@entekgroup.com](mailto:mainoffice@entekgroup.com)

**Date of Sampling:** May 25, 2022

**Lab:** Asbestech

**Job Number:** 22-6190

**Collected by:** Blake Howes

**Client Name:** Stockton Unified School District

**Turnaround Time:** Wednesday, 6-1-22 by 5:00 pm

**Site Address:** Stagg High School  
1621 Brookside Road  
Stockton, CA 95207

**ANALYSIS REQUESTED:** Asbestos by PLM with Dispersion Staining

**Special Instruction:** Stop Analysis upon first positive result (>1%) for sample in a series. Also stop analysis upon first positive result (>1%) in the joint compound for sample series.

*Please e-mail results at [mainoffice@entekgroup.com](mailto:mainoffice@entekgroup.com) as soon as available and include copy of submittal with those results.*

SAMPLE #	MATERIAL DESCRIPTION/LOCATION
ECG-22-6190-01A	Composition Asphalt Rolled Roofing & Silver Paint - Gym Roof
ECG-22-6190-01B	Composition Asphalt Rolled Roofing & Silver Paint - Gym Roof
ECG-22-6190-01C	Composition Asphalt Rolled Roofing & Silver Paint - Gym Roof
ECG-22-6190-02A	Silver Coating - Gym Roof at Pipes and Parapet Wall
ECG-22-6190-02B	Silver Coating - Gym Roof at Pipes and Parapet Wall
ECG-22-6190-02C	Silver Coating - Gym Roof at Pipes and Parapet Wall
ECG-22-6190-03A	Roof Jack Mastic - Gym Roof Ladder Hatch Curb
ECG-22-6190-04A	Remnant Roofing Debris - Gym Air Handling Spaces
ECG-22-6190-04B	Remnant Roofing Debris - Gym Air Handling Spaces
ECG-22-6190-04C	Remnant Roofing Debris - Gym Air Handling Spaces
ECG-22-6190-05A	HVAC Vibration Joint Dampener - Gym Air Handling Spaces
ECG-22-6190-06A	HVAC Duct Insulation Tape & Paper - Gym Air Handling Spaces
ECG-22-6190-07A	Mastic Puck Associated with HVAC Fiberglass Insulation Sheets - Gym Air Handling Spaces
ECG-22-6190-08A	Black Firestop Caulking - Gym Air Handling Spaces
ECG-22-6190-09A	6" OD Hard Pack Pipe Insulation - Wrestling Gym at North Ceiling
ECG-22-6190-09B	6" OD Hard Pack Pipe Insulation - Wrestling Gym at North Ceiling

**Delivered by:** [Signature] **Date:** 5/26/22 **Time:** 9:13 **AM/PM** PM

**Received by:** [Signature] **Date:** 5/26/22 **Time:** 9:13 **AM/PM** PM



69522

# BULK ASBESTOS MATERIAL *Analysis Request*

## ENTEK CONSULTING GROUP, INC.

4200 ROCKLIN ROAD, SUITE 7  
ROCKLIN, CA 95677  
(916) 632-6800 PHONE  
(916) 632-6812 FAX  
[mainoffice@entekgroup.com](mailto:mainoffice@entekgroup.com)

**Date of Sampling:** May 25, 2022

**Lab:** Asbestech

**Job Number:** 22-6190

**Collected by:** Blake Howes

**Client Name:** Stockton Unified School District

**Turnaround Time:** Wednesday, 6-1-22 by 5:00 pm

**Site Address:** Stagg High School  
1621 Brookside Road  
Stockton, CA 95207

**ANALYSIS REQUESTED:** Asbestos by PLM with Dispersion Staining

**Special Instruction:** *Stop Analysis upon first positive result (>1%) for sample in a series. Also stop analysis upon first positive result (>1%) in the joint compound for sample series.*

Please e-mail results at [mainoffice@entekgroup.com](mailto:mainoffice@entekgroup.com) as soon as available and include copy of submittal with those results.

SAMPLE #	MATERIAL DESCRIPTION/LOCATION
ECG-22-6190-09C	6" OD Hard Pack Pipe Insulation - Wrestling Gym at North Ceiling
ECG-22-6190-10A	6" OD Hard Pack Pipe Fitting & Elbow Insulation - Wrestling Gym at North Ceiling
ECG-22-6190-10B	6" OD Hard Pack Pipe Fitting & Elbow Insulation - Wrestling Gym at North Ceiling
ECG-22-6190-11A	Black Coating on Concrete Wall - Main Gym at Southeast Corner Behind Plywood Wall
ECG-22-6190-11B	Black Coating on Concrete Wall - Main Gym at Southeast Corner Behind Plywood Wall
ECG-22-6190-11C	Black Coating on Concrete Wall - Main Gym at South Wall at Vent in Plywood Wall
ECG-22-6190-11D	Black Coating on Concrete Wall - Wrestling Gym at North Wall Behind Plywood Wall
ECG-22-6190-12A	8" OD Hard Pack Pipe Insulation - Main Gym at Northeast Storage Room
ECG-22-6190-12B	8" OD Hard Pack Pipe Insulation - Main Gym at Northeast Storage Room
ECG-22-6190-12C	8" OD Hard Pack Pipe Insulation - Main Gym at Northeast Storage Room
ECG-22-6190-13A	8" OD Hard Pack Pipe Elbow Insulation - Main Gym at Northeast Storage Room
ECG-22-6190-14A	6" OD Hard Pack Pipe Insulation - Main Gym at Northeast Storage Room

**Delivered by:** [Signature] **Date:** 5/26/22 **Time:** 9:13 **AM/PM**

**Received by:** [Signature] **Date:** 5/26/22 **Time:** 9:13 **AM/PM**

**BULK ASBESTOS MATERIAL** *Analysis Request*

**ENTEK CONSULTING GROUP, INC.**

4200 ROCKLIN ROAD, SUITE 7  
 ROCKLIN, CA 95677  
 (916) 632-6800 PHONE  
 (916) 632-6812 FAX  
[mainoffice@entekgroup.com](mailto:mainoffice@entekgroup.com)

**Date of Sampling:** May 25, 2022

**Lab:** Asbestech

**Job Number:** 22-6190

**Collected by:** Blake Howes

**Client Name:** Stockton Unified School District

**Turnaround Time:** Wednesday, 6-1-22 by 5:00 pm

**Site Address:** Stagg High School  
 1621 Brookside Road  
 Stockton, CA 95207

**ANALYSIS REQUESTED:** Asbestos by PLM with Dispersion Staining

**Special Instruction:** *Stop Analysis upon first positive result (>1%) for sample in a series. Also stop analysis upon first positive result (>1%) in the joint compound for sample series.*

Please e-mail results at [mainoffice@entekgroup.com](mailto:mainoffice@entekgroup.com) as soon as available and include copy of submittal with those results.

SAMPLE #	MATERIAL DESCRIPTION/LOCATION
ECG-22-6190-14B	6" OD Hard Pack Pipe Insulation - Main Gym at Northeast Storage Room
ECG-22-6190-14C	6" OD Hard Pack Pipe Insulation - Main Gym at Northeast Storage Room
ECG-22-6190-15A	6" OD Hard Pack Pipe Elbow Insulation - Main Gym at Northeast Storage Room
ECG-22-6190-16A	Water Tank Insulation Wrap - Gym Boiler Room at Large Tank
ECG-22-6190-16B	Water Tank Insulation Wrap - Gym Boiler Room at Large Tank
ECG-22-6190-16C	Water Tank Insulation Wrap - Gym Boiler Room at Large Tank
ECG-22-6190-17A	Black "L" Shaped Base Cove & Adhesive - Wrestling Gym
ECG-22-6190-17B	Black "L" Shaped Base Cove & Adhesive - Main Gym
ECG-22-6190-18A	Drywall & Joint Compound - Gym Air Handling Spaces
ECG-22-6190-18B	Drywall & Joint Compound - Main Gym Northwest Foyer
ECG-22-6190-18C	Drywall & Joint Compound - Gym Boiler Room Ceiling
ECG-22-6190-19A	1" Green Ceramic Floor Tile & Grout - Wrestling Gym Exterior Staff Restroom
ECG-22-6190-20A	6" Green Ceramic Cove Tile & Grout - Wrestling Gym Exterior Staff Restroom
ECG-22-6190-21A	18" Acoustic Ceiling Tile (Nailed On) - Wrestling Gym
ECG-22-6190-21B	18" Acoustic Ceiling Tile (Nailed On) - Auxiliary Gym
ECG-22-6190-21C	18" Acoustic Ceiling Tile (Nailed On) - Main Gym

**Delivered by:**  **Date:** 5/26/22 **Time:** 9:13 AM/PM

**Received by:**  **Date:** 5/26/22 **Time:** 9:13 AM/PM

# BULK ASBESTOS MATERIAL *Analysis Request*

## ENTEK CONSULTING GROUP, INC.

4200 ROCKLIN ROAD, SUITE 7  
 ROCKLIN, CA 95677  
 (916) 632-6800 PHONE  
 (916) 632-6812 FAX  
[mainoffice@entekgroup.com](mailto:mainoffice@entekgroup.com)

**Date of Sampling:** May 25, 2022

**Lab:** Asbestech

**Job Number:** 22-6190

**Collected by:** Blake Howes

**Client Name:** Stockton Unified School District

**Turnaround Time:** Wednesday, 6-1-22 by 5:00 pm

**Site Address:** Stagg High School  
 1621 Brookside Road  
 Stockton, CA 95207

**ANALYSIS REQUESTED:** Asbestos by PLM with Dispersion Staining

**Special Instruction:** *Stop Analysis upon first positive result (>1%) for sample in a series. Also stop analysis upon first positive result (>1%) in the joint compound for sample series.*

*Please e-mail results at [mainoffice@entekgroup.com](mailto:mainoffice@entekgroup.com) as soon as available and include copy of submittal with those results.*

SAMPLE #	MATERIAL DESCRIPTION/LOCATION
ECG-22-6190-22A	Concrete Wall & Paint - Wrestling Gym
ECG-22-6190-22B	Concrete Wall & Paint - Main Gym
ECG-22-6190-22C	Concrete Wall & Paint - Auxiliary Gym
ECG-22-6190-23A	Stucco - Gym Building Exterior
ECG-22-6190-23B	Stucco - Gym Building Exterior
ECG-22-6190-23C	Stucco - Gym Building Exterior
ECG-22-6190-23D	Stucco - Gym Building Exterior
ECG-22-6190-23E	Stucco - Gym Building Exterior
ECG-22-6190-23F	Stucco - Gym Building Exterior
ECG-22-6190-23G	Stucco - Gym Building Exterior
ECG-22-6190-24A	Plaster - Girl's Locker Room Building
ECG-22-6190-24B	Plaster - Girl's Locker Room Building
ECG-22-6190-24C	Plaster - Girl's Locker Room Building
ECG-22-6190-25A	Composition Asphalt Rolled Roofing & Silver Paint - Girl's Locker Room Building
ECG-22-6190-26A	Plaster - Boy's Locker Room Building
ECG-22-6190-26B	Plaster - Boy's Locker Room Building

**Delivered by:**  **Date:** 5/26/22 **Time:** 9:13 AM/PM

**Received by:**  **Date:** 5/26/22 **Time:** 9:13 AM/PM



**BULK ASBESTOS MATERIAL** *Analysis Request*

**ENTEK CONSULTING GROUP, INC.**

4200 ROCKLIN ROAD, SUITE 7  
 ROCKLIN, CA 95677  
 (916) 632-6800 PHONE  
 (916) 632-6812 FAX  
[mainoffice@entekgroup.com](mailto:mainoffice@entekgroup.com)

**Date of Sampling:** May 25, 2022

**Lab:** Asbestech

**Job Number:** 22-6190

**Collected by:** Blake Howes

**Client Name:** Stockton Unified School District

**Turnaround Time:** Wednesday, 6-1-22 by 5:00 pm

**Site Address:** Stagg High School  
 1621 Brookside Road  
 Stockton, CA 95207

**ANALYSIS REQUESTED:** Asbestos by PLM with Dispersion Staining

**Special Instruction:** Stop Analysis upon first positive result (>1%) for sample in a series. Also stop analysis upon first positive result (>1%) in the joint compound for sample series.

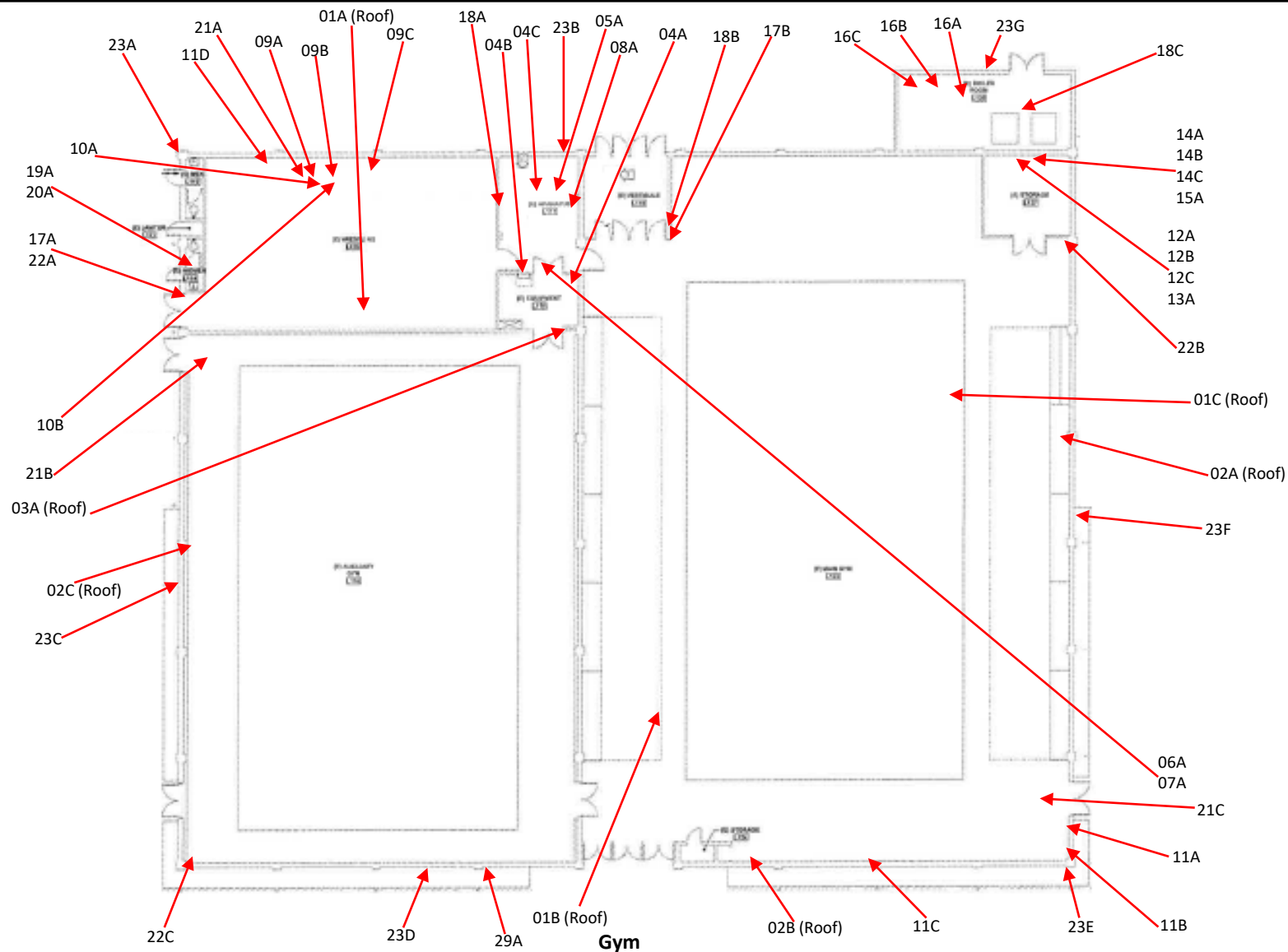
Please e-mail results at [mainoffice@entekgroup.com](mailto:mainoffice@entekgroup.com) as soon as available and include copy of submittal with those results.

SAMPLE #	MATERIAL DESCRIPTION/LOCATION
ECG-22-6190-26C	Plaster - Boy's Locker Room Building
ECG-22-6190-27A	Composition Asphalt Rolled Roofing & Silver Paint - Boy's Locker Room Building
ECG-22-6190-28A	HVAC Duct Seam Tape - Boy's Locker Room Building Roof
ECG-22-6190-29A	Concrete Wall Panel Seam Caulking - Gym Building Exterior

C:\Users\howes\Entek Consulting Group, Inc\Entekgroup - Documents\Clients\Stockton USD\22-6190 Stagg HS Gym - HVAC Replacement - HazMat\Bulk Asb\Bulk Request 05-26-22.wpd

**Delivered by:**  **Date:** 5/26/22 **Time:** 9:13 AM/PM

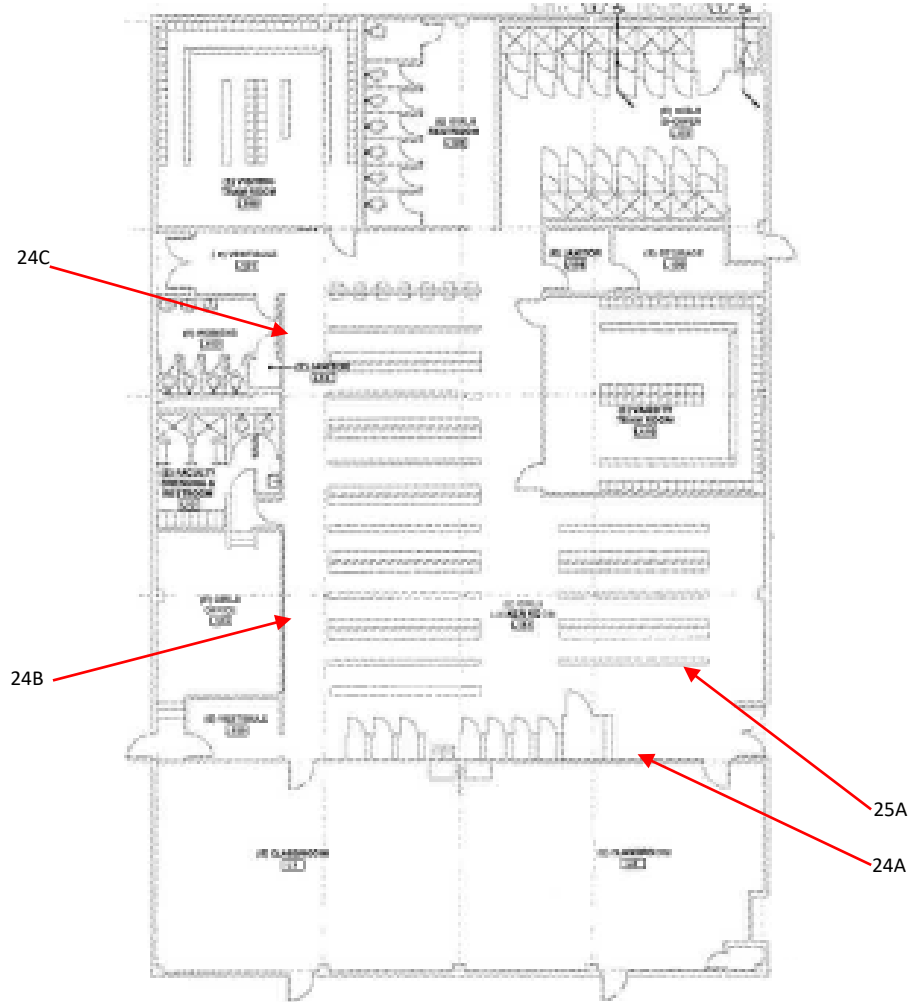
**Received by:** \_\_\_\_\_ **Date:** / / **Time:** AM/PM



Stockton Unified School District  
Stagg High School – Gym HVAC & Roof  
1621 Brookside Road  
Stockton, CA 95207

Entek Consulting Group, Inc.  
4200 Rocklin Road, Suite 7  
Rocklin, CA 95677  
Map Not to Scale

Asbestos Bulk Sample Locations  
Collected by Blake Howes & Jose Hernandez  
On May 25, 2022  
Project Number 22-6190

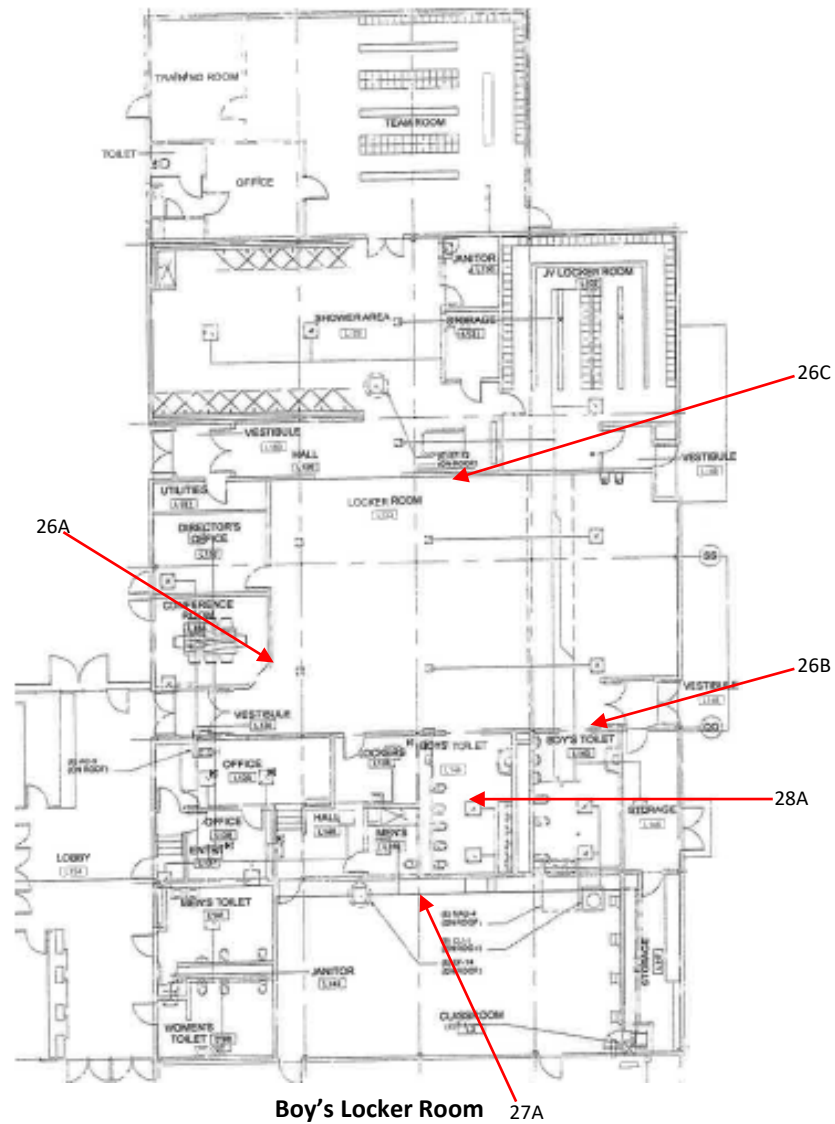


**Girls Locker Room**

Stockton Unified School District  
Stagg High School – Gym HVAC & Roof  
1621 Brookside Road  
Stockton, CA 95207

Entek Consulting Group, Inc.  
4200 Rocklin Road, Suite 7  
Rocklin, CA 95677  
Map Not to Scale

Asbestos Bulk Sample Locations  
Collected by Blake Howes & Jose Hernandez  
On May 25, 2022  
Project Number 22-6190



Stockton Unified School District  
Stagg High School – Gym HVAC & Roof  
1621 Brookside Road  
Stockton, CA 95207

Entek Consulting Group, Inc.  
4200 Rocklin Road, Suite 7  
Rocklin, CA 95677  
Map Not to Scale

Asbestos Bulk Sample Locations  
Collected by Blake Howes & Jose Hernandez  
On May 25, 2022  
Project Number 22-6190

## **APPENDIX B**

### **LEAD RELATED DOCUMENTS**

- Lead in Paint Samples Analysis Report From Microtest
- Bulk Lead Material Analysis Request Form for Entek
- Lead Bulk Sample Location Drawing
- Lead Hazard Evaluation Report (CDPH 8552)



**MicroTest Laboratories, Inc. | AIHA ELPAT #160934**  
 3110 Gold Canal Dr, Ste. A, Rancho Cordova, CA 95670  
 PH 916.567.9808 | FX 916.404.0302  
 www.microtestlabsinc.com | service@microtestlabsinc.com

\*\*\*for office use only\*\*\*

**Accession Numbers:**

**L29629-39**

**CLIENT INFORMATION**

**Company** Entek Consulting Group, Inc  
**Name** Ryan Metzen  
**Address** 4200 Rocklin Road, Suite 7  
 Rocklin, CA 95677  
**Phone** 916.632.6800  
**Email** mainoffice@entekgroup.com  
 rmetzen@entekgroup.com

**SAMPLE**

**Date** Wednesday, May 25, 2022  
**Time**

**MicroTest Laboratories**

Analytical Data

**JOB SITE INFORMATION**

**Sampler** Blake Howes  
**Job #** 22-6190  
**Project** Stockton Unified School District  
**Site** Stagg High School  
**Address** 1621 Brookside Road  
 Stockton, CA 95207

**EPA METHOD 7420**

Sample ID	Accession Number	Location	Matrix	Results	Units	Reporting Limits	Notes/Comments
ECG-22-6190-01Pb	L29629	Whitie Colored Paint - Wrestling Gym at Ceiling I-Beams	Paint	<b>3.20%</b>	Wt %	0.01%	<b>31998</b> PPM
ECG-22-6190-02Pb	L29630	Yelolow Colored Paint - Wrestling Gym at Ceiling I-Beams	Paint	<b>3.49%</b>	Wt %	0.01%	<b>34897</b> PPM
ECG-22-6190-03Pb	L29631	Blue / Gray Colored Paint - Wrestling Gym at Ceiling HVAC Ducts	Paint	<b>0.04%</b>	Wt %	0.01%	<b>385</b> PPM
ECG-22-6190-04Pb	L29632	Red Colored Paint - Gym Air Handling Spaces at Ceiling I-Beams	Paint	<b>27.57%</b>	Wt %	0.01%	<b>275691</b> PPM
ECG-22-6190-05Pb	L29633	Blue / Gray Colored Paint - Main Gym at Concrete Walls	Paint	<b>0.07%</b>	Wt %	0.01%	<b>748</b> PPM
ECG-22-6190-06Pb	L29634	Gray Colored Paint - Main Gym at Plywood Walls	Paint	<b>0.02%</b>	Wt %	0.01%	<b>188</b> PPM
ECG-22-6190-07Pb	L29635	Beige Colored Paint - Gym Building Exterior Stucco Walls	Paint	<b>&lt;0.01%</b>	Wt %	0.01%	<b>&lt;100</b> PPM
ECG-22-6190-08Pb	L29636	Beige Colored Paint - Gym Building Exterior Metal Louvre Vents	Paint	<b>0.05%</b>	Wt %	0.01%	<b>499</b> PPM
ECG-22-6190-09Pb	L29637	Green Colored Tile Glaze - Wrestling Gym Exterior Restrooms, 6" Ceramic Cove Tile	Paint	<b>0.94%</b>	Wt %	0.01%	<b>9443</b> PPM
ECG-22-6190-10Pb	L29638	Dark Gray Colored Paint - Wrestling Gym at Metal Door Frame	Paint	<b>&lt;0.01%</b>	Wt %	0.01%	<b>&lt;100</b> PPM

**REPORT**

**Date** Thursday, May 26, 2022  
**Time**

Samples Received: 11  
 Samples Analyzed: 11

Authorized Signatory:

Kelly Favero - Lab Manager

This report applies to the standards and procedures indicated and to the specific samples analyzed. Samples have NOT been corrected for blank values. EPA Method 7000B & EPA Method 7420=EPA 600R/R93/200 Preparation Modified & EPA 7000B & EPA 7420 Analysis Modified.



**MicroTest Laboratories, Inc. | AIHA ELPAT #160934**  
 3110 Gold Canal Dr, Ste. A, Rancho Cordova, CA 95670  
 PH 916.567.9808 | FX 916.404.0302  
 www.microtestlabsinc.com | service@microtestlabsinc.com

\*\*\*for office use only\*\*\*

**Accession Numbers:**

**L29629-39**

**CLIENT INFORMATION**

**Company** Entek Consulting Group, Inc  
**Name** Ryan Metzen  
**Address** 4200 Rocklin Road, Suite 7  
 Rocklin, CA 95677  
**Phone** 916.632.6800  
**Email** mainoffice@entekgroup.com  
 rmetzen@entekgroup.com

**SAMPLE**

**Date** Wednesday, May 25, 2022  
**Time**

**MicroTest Laboratories**

**Analytical Data**

**JOB SITE INFORMATION**

**Sampler** Blake Howes  
**Job #** 22-6190  
**Project** Stockton Unified School District  
**Site** Stagg High School  
**Address** 1621 Brookside Road  
 Stockton, CA 95207

**EPA METHOD 7420**

Sample ID	Accession Number	Location	Matrix	Results	Units	Reporting Limits	Notes/Comments
ECG-22-6190-11Pb	L29639	Blue / Gray Colored Paint - Girl's Locker Room at Plaster Walls	Paint	<b>0.13%</b>	Wt %	0.01%	<b>1312</b> PPM

**REPORT**

**Date** Thursday, May 26, 2022  
**Time**

Samples Received: 11  
 Samples Analyzed: 11

Authorized Signatory:   
 Kelly Favero - Lab Manager

This report applies to the standards and procedures indicated and to the specific samples analyzed. Samples have NOT been corrected for blank values. EPA Method 7000B & EPA Method 7420=EPA 600R/R93/200 Preparation Modified & EPA 7000B & EPA 7420 Analysis Modified.



### BULK LEAD MATERIAL *Analysis Request*

**ENTEK CONSULTING GROUP, INC.**

4200 ROCKLIN ROAD, SUITE 7  
ROCKLIN, CA 95677  
(916) 632-6800 PHONE  
(916) 632-6812 FAX  
mainoffice@entekgroup.com

**Date of Sampling:** May 25, 2022

**Lab:** MicroTest Laboratories

**Job Number:** 22-6190

**Collected by:** Blake Howes

**Client Name:** Stockton Unified School District

**Turnaround Time:** 48 Hour

**Site Address:** Stagg High School  
1621 Brookside Road  
Stockton, CA 95207

**ANALYSIS REQUESTED:** Lead by Flame Atomic  
Absorption Spectroscopy

**Special Instruction:** *Please report result in PPM and % by weight. Please email results as soon as possible.*

SAMPLE #	MATERIAL DESCRIPTION/LOCATION
ECG-22-6190-01Pb	Whitie Colored Paint - Wrestling Gym at Ceiling I-Beams
ECG-22-6190-02Pb	Yellow Colored Paint - Wrestling Gym at Ceiling I-Beams
ECG-22-6190-03Pb	Blue/Gray Colored Paint - Wrestling Gym at Ceiling HVAC Ducts
ECG-22-6190-04Pb	Red Colored Paint - Gym Air Handling Spaces at Ceiling I-Beams
ECG-22-6190-05Pb	Blue/Gray Colored Paint - Main Gym at Concrete Walls
ECG-22-6190-06Pb	Gray Colored Paint - Main Gym at Plywood Walls
ECG-22-6190-07Pb	Beige Colored Paint - Gym Building Exterior Stucco Walls
ECG-22-6190-08Pb	Beige Colored Paint - Gym Building Exterior Metal Louvre Vents
ECG-22-6190-09Pb	Green Colored Tile Glaze - Wrestling Gym Exterior Restrooms, 6" Ceramic Cove Tile
ECG-22-6190-10Pb	Dark Gray Colored Paint - Wrestling Gym at Metal Door Frames
ECG-22-6190-11Pb	Blue/Gray Colored Paint - Girl's Locker Room at Plaster Walls

C:\Users\bhowes\Entek Consulting Group, Inc\Entekgroup - Documents\Clients\Stockton USD\22-6190 Stagg HS Gym - HVAC Replacement - HazMat\Bulk Pb\Bulk Request Pb 05-25-22.wpd

Delivered by:

Date:

5/26/22

Time:

9:18 AM/PM

Received by:

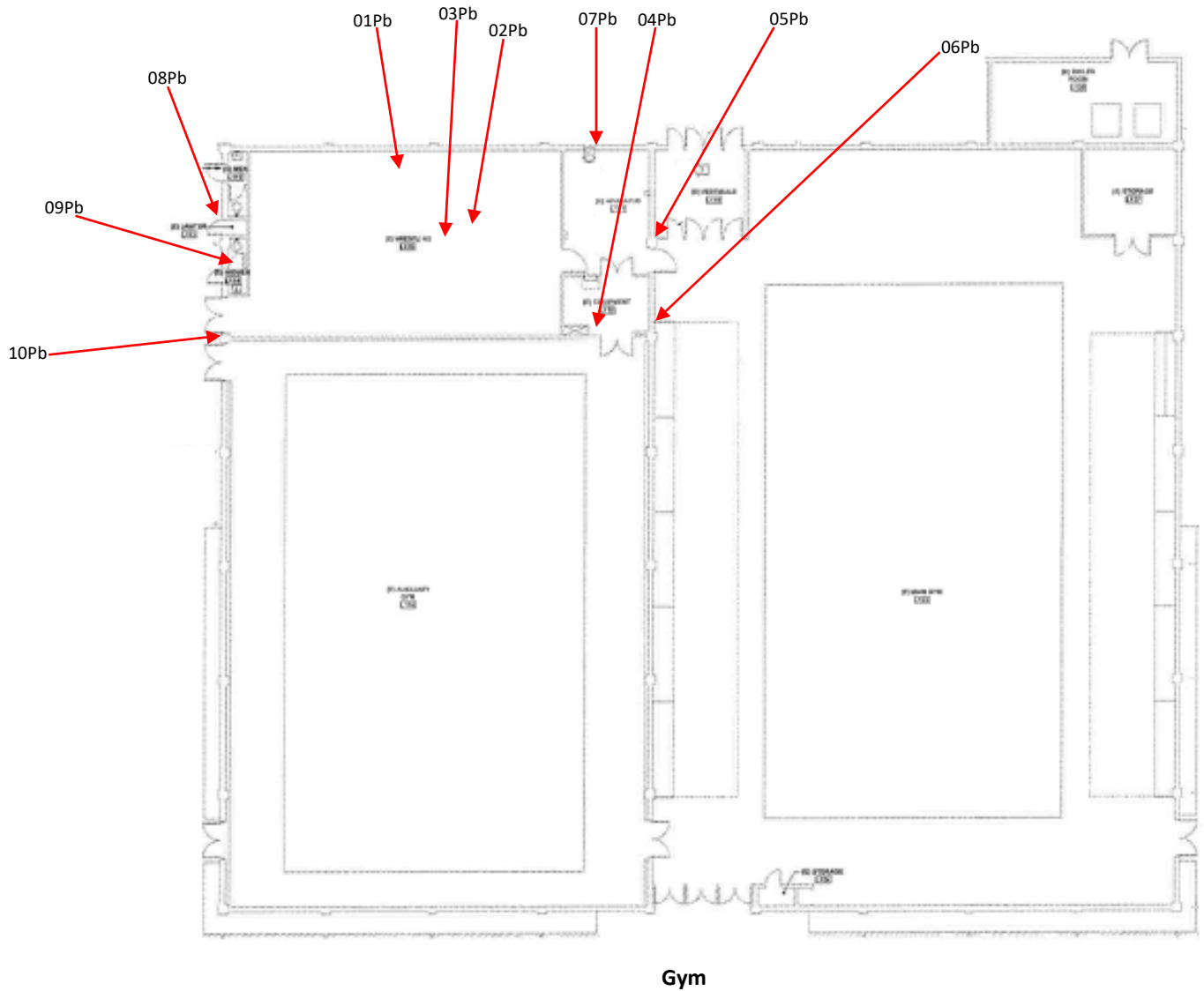
Date:

5/26/22

Time:

9:20 AM/PM





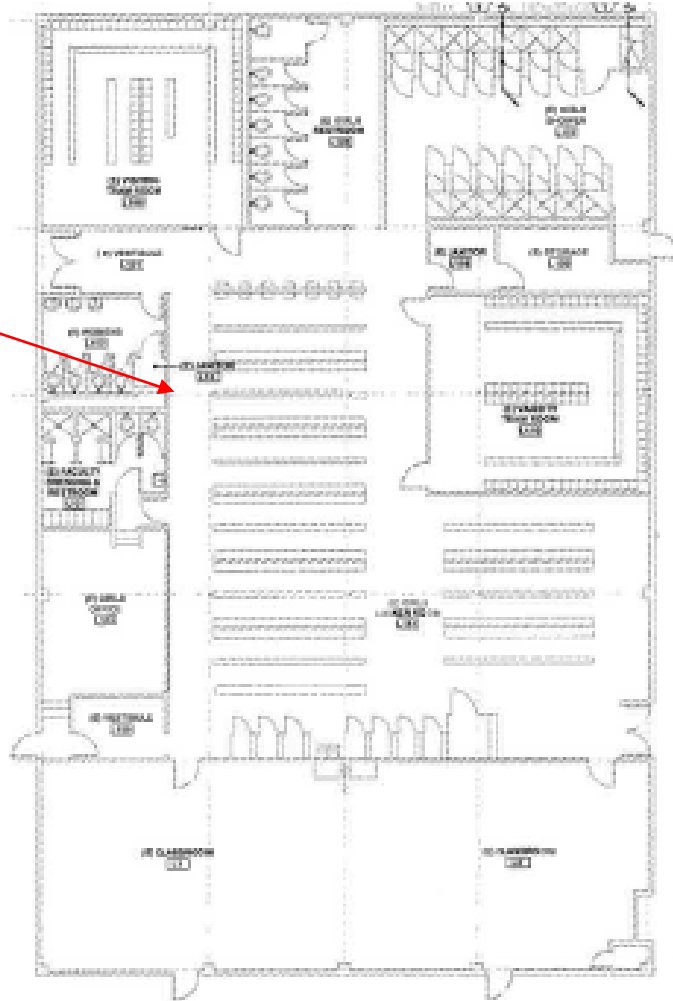
Stockton Unified School District  
Stagg High School – Gym HVAC & Roof  
1621 Brookside Road  
Stockton, CA 95207

Entek Consulting Group, Inc.  
4200 Rocklin Road, Suite 7  
Rocklin, CA 95677  
Map Not to Scale

Lead Bulk Sample Locations  
Collected by Blake Howes & Jose Hernandez  
On May 25, 2022  
Project Number 22-6190



11Pb



**Girl's Locker Room**

Stockton Unified School District  
Stagg High School – Gym HVAC & Roof  
1621 Brookside Road  
Stockton, CA 95207

Entek Consulting Group, Inc.  
4200 Rocklin Road, Suite 7  
Rocklin, CA 95677  
Map Not to Scale

Cloud\Documents\Clients\Stockton USD\22-6190 Stagg HS Gym - HVAC Replacement -  
HazMat\Drawings

Lead Bulk Sample Locations  
Collected by Blake Howes & Jose Hernandez  
On May 25, 2022  
Project Number 22-6190

## LEAD HAZARD EVALUATION REPORT

**Section 1 – Date of Lead Hazard Evaluation** \_\_\_\_\_

**Section 2 – Type of Lead Hazard Evaluation (Check one box only)**

Lead Inspection     Risk assessment     Clearance Inspection     Other (specify) \_\_\_\_\_

**Section 3 – Structure Where Lead Hazard Evaluation Was Conducted**

Address [number, street, apartment (if applicable)]		City	County	Zip Code
Construction date (year) of structure	Type of structure <input type="checkbox"/> Multi-unit building <input type="checkbox"/> School or daycare <input type="checkbox"/> Single family dwelling <input type="checkbox"/> Other _____		Children living in structure? <input type="checkbox"/> Yes <input type="checkbox"/> No <input type="checkbox"/> Don't Know	

**Section 4 – Owner of Structure (if business/agency, list contact person)**

Name		Telephone number		
Address [number, street, apartment (if applicable)]		City	State	Zip Code

**Section 5 – Results of Lead Hazard Evaluation (check all that apply)**

No lead-based paint detected   
  Intact lead-based paint detected   
  Deteriorated lead-based paint detected  
 No lead hazards detected   
 Lead-contaminated dust found   
 Lead-contaminated soil found   
 Other \_\_\_\_\_

**Section 6 – Individual Conducting Lead Hazard Evaluation**

Name		Telephone number		
Address [number, street, apartment (if applicable)]		City	State	Zip Code
CDPH certification number	Signature <i style="font-family: cursive;">Blake Howes</i>			Date

Name and CDPH certification number of any other individuals conducting sampling or testing (if applicable)

**Section 7 – Attachments**

- A. A foundation diagram or sketch of the structure indicating the specific locations of each lead hazard or presence of lead-based paint;
- B. Each testing method, device, and sampling procedure used;
- C. All data collected, including quality control data, laboratory results, including laboratory name, address, and phone number.

First copy and attachments retained by inspector  
 Second copy and attachments retained by owner

Third copy only (no attachments) mailed or faxed to:  
 California Department of Public Health  
 Childhood Lead Poisoning Prevention Branch Reports  
 850 Marina Bay Parkway, Building P, Third Floor  
 Richmond, CA 94804-6403  
 Fax: (510) 620-5656

## **APPENDIX C**

### **BACK UP DOCUMENTATION**

- Site Map
- Photo Log
- Inspector Accreditations and Certifications
- Laboratory Accreditations for Asbestos and Lead Analysis



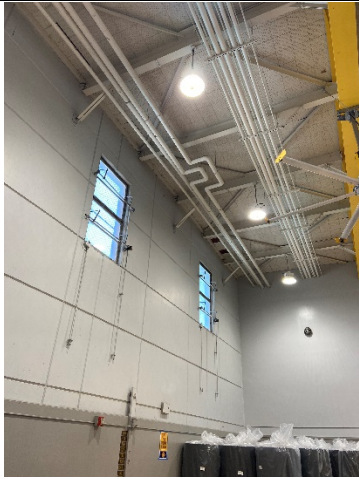
Stockton Unified School District  
Stagg High School – Gym HVAC & Roof  
1621 Brookside Road  
Stockton, CA 95207

Entek Consulting Group, Inc.  
4200 Rocklin Road, Suite 7  
Rocklin, CA 95677  
Map Not to Scale

Site Map  
Project Number 22-6190

# Photo Log

Job Number:	22-6190	Date:	5-25-22
Client:	Stockton Unified School District		
Site Address:	1621 Brookside Road, Stockton, CA 95207		



View of the overhead pipe insulation in the Wrestling Gym.



Example of the asbestos containing 6" OD Hardpack Pipe Elbow Insulation.



View of the nailed-on ceiling tiles.



Example of the Yellow Colored Lead-Based Paint on the structural I-Beams located inside the Gym Buildings.

# Photo Log

Job Number:	22-6190	Date:	5-25-22
Client:	Stockton Unified School District		
Site Address:	1621 Brookside Road, Stockton, CA 95207		

	
<p>Example of the White Colored Lead-Based Paint on the structural I-Beams located inside the Gym Buildings.</p>	<p>Example of the black coating on the concrete walls found behind the wood panels inside the Gym Buildings.</p>
	
<p>Example of the asbestos containing construction material: drywall and joint compound ceiling system inside the Boiler Room</p>	<p>Example of the Lead-Based Green colored tile glaze on the Ceramic Cove Tile located inside the Wrestling Gym Exterior Restrooms.</p>

# Photo Log

Job Number:	22-6190	Date:	5-25-22
Client:	Stockton Unified School District		
Site Address:	1621 Brookside Road, Stockton, CA 95207		



Example of the asbestos containing 8" OD Hardpack Pipe Elbow Insulation.



Example of the painted composition asphalt rolled roofing.



View of the HVAC Duct inside the Mechanical Room. This duct obstructed access to the pipes above.



Example of the 6" OD Hardpack Pipe Insulation above the HVAC Duct. The insulation around these pipes are assumed asbestos containing materials.



State of California  
Division of Occupational Safety and Health  
**Certified Asbestos Consultant**

**Blake W Howes**

Name



Certification No. **13-5015**

Expires on **04/17/23**

This certification was issued by the Division of Occupational Safety and Health as authorized by Sections 7180 et seq. of the Business and Professions Code.



STATE OF CALIFORNIA  
DEPARTMENT OF PUBLIC HEALTH



# LEAD-RELATED CONSTRUCTION CERTIFICATE

INDIVIDUAL:



CERTIFICATE TYPE:

Lead Inspector/Assessor

NUMBER:

LRC-00003315

EXPIRATION DATE:

9/27/2022

**Blake Howes**

Disclaimer: This document alone should not be relied upon to confirm certification status. Compare the individual's photo and name to another valid form of government issued photo identification. Verify the individual's certification status by searching for Lead-Related Construction Professionals at [www.cdph.ca.gov/programs/clppb](http://www.cdph.ca.gov/programs/clppb) or calling (800) 597-LEAD.

State of California  
Division of Occupational Safety and Health  
**Certified Asbestos Consultant**

**Jose A Hernandez**

Name



Certification No. **11-6995**

Expires on **01/21/23**

This certification was issued by the Division of Occupational Safety and Health as authorized by Sections 7180 et seq. of the Business and Professions Code.



STATE OF CALIFORNIA  
DEPARTMENT OF PUBLIC HEALTH



# LEAD-RELATED CONSTRUCTION CERTIFICATE

INDIVIDUAL:



Jose Hernandez

CERTIFICATE TYPE:

Lead Sampling Technician

NUMBER:

LRC-00003446

EXPIRATION DATE:

10/27/2022

Disclaimer: This document alone should not be relied upon to confirm certification status. Compare the individual's photo and name to another valid form of government issued photo identification. Verify the individual's certification status by searching for Lead-Related Construction Professionals at [www.cdph.ca.gov/programs/clppb](http://www.cdph.ca.gov/programs/clppb) or calling (800) 597-LEAD.

United States Department of Commerce  
National Institute of Standards and Technology



---

**Certificate of Accreditation to ISO/IEC 17025:2017**

---

NVLAP LAB CODE: 101442-0

**ASBESTECH**  
Rancho Cordova, CA

*is accredited by the National Voluntary Laboratory Accreditation Program for specific services,  
listed on the Scope of Accreditation, for:*

**Asbestos Fiber Analysis**

*This laboratory is accredited in accordance with the recognized International Standard ISO/IEC 17025:2017.  
This accreditation demonstrates technical competence for a defined scope and the operation of a laboratory quality  
management system (refer to joint ISO-ILAC-IAF Communique dated January 2009).*

---

2021-07-01 through 2022-06-30

*Effective Dates*

A handwritten signature in blue ink, reading "Dana S. Haman".

---

*For the National Voluntary Laboratory Accreditation Program*



**SCOPE OF ACCREDITATION TO ISO/IEC 17025:2017**

**ASBESTECH**

11151 Sun Center Drive, Suite B  
Rancho Cordova, CA 95670

Mr. Tommy Conlon

Phone: 916-481-8902 Fax: 916-481-3975

Email: [asbestech@sbcglobal.net](mailto:asbestech@sbcglobal.net)

<http://www.asbestechlab.com>

**ASBESTOS FIBER ANALYSIS**

**NVLAP LAB CODE 101442-0**

**Bulk Asbestos Analysis**

**Code**

**Description**

18/A01

EPA -- 40 CFR Appendix E to Subpart E of Part 763, Interim Method of the Determination of Asbestos in Bulk Insulation Samples

18/A03

EPA 600/R-93/116: Method for the Determination of Asbestos in Bulk Building Materials

**Airborne Asbestos Analysis**

**Code**

**Description**

18/A02

U.S. EPA's "Interim Transmission Electron Microscopy Analytical Methods-Mandatory and Nonmandatory-and Mandatory Section to Determine Completion of Response Actions" as found in 40 CFR, Part 763, Subpart E, Appendix A.

A handwritten signature in blue ink, appearing to read "Dana S. Laman".

*For the National Voluntary Laboratory Accreditation Program*



STATE WATER RESOURCES CONTROL BOARD  
REGIONAL WATER QUALITY CONTROL BOARDS



CALIFORNIA STATE

ENVIRONMENTAL LABORATORY ACCREDITATION PROGRAM

**CERTIFICATE OF ENVIRONMENTAL ACCREDITATION**

Is hereby granted to

**MicroTest Laboratories, Inc.**

3110 Gold Canal Drive  
Rancho Cordova, CA 95670

Scope of the certificate is limited to the  
"Fields of Testing"  
which accompany this Certificate.

Continued accredited status depends on successful completion of on-site inspection,  
proficiency testing studies, and payment of applicable fees.

This Certificate is granted in accordance with provisions of  
Section 100825, et seq. of the Health and Safety Code.

Certificate No.: **2974**

Expiration Date: **6/30/2022**

Effective Date: **7/1/2020**

A handwritten signature in blue ink, appearing to read "Christine Sotelo".

Sacramento, California  
subject to forfeiture or revocation

Christine Sotelo, Chief  
Environmental Laboratory Accreditation Program



**CALIFORNIA STATE  
ENVIRONMENTAL LABORATORY ACCREDITATION PROGRAM  
Accredited Fields of Testing**



**MicroTest Laboratories, Inc.**

3110 Gold Canal Drive  
Rancho Cordova, CA 95670  
Phone: 9165679808

**Certificate No. 2974  
Expiration Date 6/30/2022**

**Field of Testing: 114 - Inorganic Chemistry of Hazardous Waste**

114.130	001	Lead	EPA 7420
---------	-----	------	----------

**Field of Testing: 115 - Extraction Test of Hazardous Waste**

115.020	001	Toxicity Characteristic Leaching Procedure (TCLP)	EPA 1311 (TCLP)
115.030	001	Waste Extraction Test (WET)	CCR Chapter11, Article 5, Appendix II

**Field of Testing: 121 - Bulk Asbestos Analysis of Hazardous Waste**

121.010	001	Bulk Asbestos	EPA 600/M4-82-020
---------	-----	---------------	-------------------